

## Distribution Agreement

In presenting this thesis or dissertation as a partial fulfillment of the requirements for an advanced degree from Emory University, I hereby grant to Emory University and its agents the non-exclusive license to archive, make accessible, and display my thesis or dissertation in whole or in part in all forms of media, now or hereafter known, including display on the world wide web. I understand that I may select some access restrictions as part of the online submission of this thesis or dissertation. I retain all ownership rights to the copyright of the thesis or dissertation. I also retain the right to use in future works (such as articles or books) all or part of this thesis or dissertation.

Signature:

\_\_\_\_\_  
Tylor Reynolds

04/27/2020

\_\_\_\_\_  
Date

Investigating environmental risk factors of dementia

By

Tylor Reynolds

Master of Public Health

The Gangarosa Department of Environmental Health

---

William Michael Caudle, PhD  
Committee Chair

Investigating environmental risk factors of dementia

By

Tylor Reynolds

B.S. Community Health Education  
Western Oregon University  
2017

Thesis Committee Chair: William Michael Caudle, PhD

An abstract of  
A thesis submitted to the Faculty of the  
Rollins School of Public Health of Emory University  
in partial fulfillment of the requirements for the degree of  
Master of Public Health  
in Environmental Health  
2020

## Abstract

### Investigating environmental risk factors of dementia

By

Tylor Reynolds

**Background:** Dementia is a neurodegenerative disease that can commonly associated with cognitive decline and impacts approximately 1 in 10 individuals over the age of 65. There are many known environmental and genetic factors that potentially contribute to the development of dementia.

**Objectives:** To examine environmental factors of dementia and determine if the extent of interaction between smoking, exposure to lead, and exposure to organochlorine insecticides. **Methods:** Data was collected from 100 participants over 65 years old from the 2013-2014 NHANES public dataset and analyzed in SAS. Logistic regression models were constructed to determine if smoking, lead exposure or exposure to DDT was correlated with lower signs of cognitive functioning. A multivariate model using environmental exposures was also constructed and analyzed to assess potential interaction. **Results:** Elevated levels of blood lead and DDT were correlated with a lower cognitive score which could indicate that these variables were promoting cognitive decline. Analysis revealed no significant relationship between serum cotinine levels and cognitive scores. **Discussion:** More investigation should be conducted regarding potential interactions between environmental and genetic factors of dementia. Smoking has been linked to dementia and cognitive decline in previous studies, however this data revealed no such relationship.

Investigating environmental risk factors of dementia

By

Tylor Reynolds

Bachelor of Science

Western Oregon University

2017

Thesis Committee Chair: William Michael Caudle, Ph.D

A thesis submitted to the Faculty of the Rollins School of Public Health of Emory  
University in partial fulfillment of the requirements for the degree of

Master of Public Health

in Environmental Health

2020

## Acknowledgements

I would like to thank my advisor, William Michael Caudle, for his guidance and valuable feedback during this work. All his support was very insightful and informative during this entire process.

## **Table of Contents**

Introduction .....	1
Literature Review.....	2
Effects of smoking on cognitive decline.....	3
Lead exposure effects on cognitive decline.....	4
Effects of pesticide exposure on cognitive impairment.....	5
Methods.....	5
Results.....	7
Figures.....	9-15
Discussion.....	16

## Background

Dementia is a neurodegenerative disease that has a projected global prevalence of about 1-in-10 individuals greater than 65 years old.<sup>1</sup> It is estimated that in 2018 there were 50 million people around the world who were living with dementia.<sup>2</sup> Research has indicated that various metals also potentially contribute to an individual's risk of developing dementia.<sup>2</sup> Dementia causes a cognitive decline among the elderly population, which causes an estimated healthcare cost of \$172 billion dollars annually.<sup>3</sup> Currently there is a large amount of research indicating that genetics are important factors towards a person's risk for developing dementia, however there is much less research into the environmental risk factors of dementia, such as pesticides.<sup>4</sup> Little research has indicated that there is likely an interaction between genetics and environmental risk factors of dementia.<sup>5</sup> Further research is needed in order to establish just how important environmental factors are towards the development of dementia.

The main purpose of this study is to investigate potential environmental contributors towards the development of dementia; by investigating potential environmental contributors to dementia it could be possible to develop a better understanding of how to protect populations from becoming future cases of dementia. Three of the main environmental exposures that this study will be focused on are smoking, pesticides, and lead exposure. Reducing cases of dementia would lead to a reduction of healthcare related costs, which could then be allocated elsewhere. Environmental factors play an important role in the development of dementia and should be better understood in order to protect the elderly population. This study aims to investigate the impacts that various



environmental risk factors have on dementia. It is believed that all three variables of interest will be correlated with a higher incidence of dementia.

### **Literature Review**

Dementia is a neurodegenerative disease which can frequently identified by cognitive impairment, it most commonly affects the elderly population.<sup>6</sup> Cognitive impairment can be characterized as cognitive decline that is greater than the expected amount for an individual's age and education level.<sup>7</sup> Cognitive decline can be observed most frequently among the elderly population and results in the loss of neurons.<sup>7</sup> Alzheimer's disease is a form of dementia

There is still much that is unknown about dementia however there is research that suggests potential contributors towards this disease. One notable risk factor for dementia would be an individual's smoking habits.<sup>4</sup> Research has shown that not only have current smokers been found an increase in risk of Alzheimer's including dementia, but people with previous history of smoking have also been found to have a greater risk of developing dementia than people with no history of smoking.<sup>5</sup> Environmental factors are important in understanding dementia, however Alzheimer's disease including dementia is also known to have a big genetic component associated.<sup>8</sup> Two major notable genetic components of Alzheimer's disease are ApoE4 (Apolipoprotein E4) and Trx1 (Thioredoxin-1).<sup>9,10</sup> There have been potential interactions theorized between environmental and genetic risk factors of dementia, however data on these interactions are rare and difficult to obtain.<sup>5</sup>

## **Effects of smoking on dementia**

Smoking status is widely recognized as an important risk factor towards the development of dementia.<sup>11</sup> Mixed results exist among studies that examine relationships between former smoker status and dementia, however there exists a multitude of research that establishes a relationship between current smoker status and development of dementia at a younger age or reduced cognition in general.<sup>11,12,13</sup> Not much is understood about the biological mechanisms that contribute to a higher risk of dementia but a working hypothesis is that oxidative stress generated by smoking is a major contributor.<sup>14</sup> Oxidative stress is created by an imbalance between reactive oxygen species (ROS) and antioxidant defenses.<sup>15</sup> Given the complex composition of cigarettes and their cytotoxic/carcinogenic compounds it is no surprise that combustion of these products is a generator of oxidative stress.<sup>16</sup> The nervous system is extremely sensitive to oxidative stress due to the brain's high demand for oxygen to survive.

There exists a huge stigma towards smokers in our society and this can potentially affect studies that utilize self-reporting of smoking status to determine actual smoker status, this can make a better argument to utilize biomarkers for assessing an objective marker of smoking status.<sup>17</sup> Presence of nicotine can also serve as a good biomarker for determining smoker status however it has a relatively short half-life which makes it difficult to assess lifetime exposure.<sup>18</sup>

## **Lead exposure effects on cognitive decline**

Heavy metals have been widely considered as an extreme environmental concern and have been observed to demonstrate an effect on cognitive decline and development of dementia.<sup>19</sup> One of the most widely recognized and studied heavy metals that affects cognition is lead.<sup>20-23</sup> Exposure to lead has been demonstrated to negatively impact cognition of mammalian species and increase the risk of developing dementia in later stages of life.<sup>20-23</sup> Lead exposure is a complicated issue and is primarily tied to occupational exposures among workers.<sup>24</sup> Lead exposure used to be a lot more common in the past however its widespread use has been discontinued in many countries. Lead is a poisonous heavy metal that affects nearly every organ in the body, but it especially impacts the nervous system.<sup>23</sup> Lead toxicity induces oxidative stress and intensifies oxidative stress.<sup>25</sup>

There are many potential biomarkers available to assess lead exposure but the most commonly measured option is blood lead.<sup>26</sup> One of the issues with using blood lead is that it has a relatively short half-life, which makes it potentially difficult to assess a long time exposure. Bone lead is a possible biomarker that would get a better sense of a chronic exposure; however, it is rarer to see bone lead being measured due to its high cost.

## **Effects of pesticide exposure on cognitive impairment**

Currently there is some data available that suggests that lifetime exposure to copious amounts of pesticides can likely lead to a higher risk of developing Alzheimer's including dementia in later life.<sup>26</sup> Epidemiological studies suggest that organochlorines and organophosphate insecticides are associated with an increased risk of cognitive decline in later life.<sup>26</sup> Currently the biological mechanisms are not well understood on what contributes to the higher risk of cognitive decline due to insecticide exposure.<sup>26</sup> A pesticide is defined as "any substance or mixture of substances intended for the preventing, destroying or controlling any pest."<sup>27</sup> DDT is an organochlorine pesticide that was primarily used between 1940-1972, after which the EPA banned the use of this pesticide for residential use.<sup>28</sup> Levels of DDT in the United States have decreased significantly, however there still remains some levels of this pesticide in the environment.<sup>28</sup> DDT has been shown to disrupt the nervous system and it has been shown to generate oxidative stress which can potentially lead to apoptosis of neurons.<sup>29</sup>

## **Methods**

Data was gathered from the National Health and Nutrition Examination Survey (NHANES) public dataset from 2013 - 2014 to assess environmental exposures and their relationship with cognitive impairment. 100 individuals were selected from the NHANES database after removing all participants who had missing data from any of the variables of interest. Individuals under 65 years of age were also removed from the study as dementia is a disease that primarily affects the elderly population. This study utilized statistical analysis via SAS and data was analyzed using a logistic regression

model. The key variables of interest of this study include smoking, pesticides, and lead blood levels. Smoking status was assessed via serum cotinine levels in order to reduce the potential effects of self-reporting bias. Exposure to lead was assessed via blood lead levels. It would have been preferable to obtain bone lead levels due to the significantly longer half-life, however that data was not available.<sup>28</sup> Lastly pesticide exposure was assessed via dichlorodiphenyltrichloroethane(DDT) serum levels, this variable was chosen due to previous literature indicating a possibility that exposure to DDT is possibly an indicator of dementia.<sup>30</sup> The main outcome of interest in this study is cognitive impairment, which is widely accepted as an early symptom of dementia.<sup>31</sup> One of the more widely used biomarkers for assessing pesticide exposure is through blood serum levels, depending on the substance of interest the half-life could be relatively short however data on blood serum pesticide levels usually are collected more often.<sup>32</sup>

### **Laboratory methods**

Serum samples from NHANES 2013-2014 were stored frozen before analysis. Organochlorine pesticides and metabolites were measured in serum using automated liquid/liquid extraction and subsequent sample clean-up. Final determination of target analytes was performed by isotope dilution gas chromatography high-resolution mass spectrometry GC/IDHRMS. Whole blood specimens were processed, stored, and shipped to the National Center for Environmental Health, and Centers for Disease Control and Prevention for analysis.

## **Analysis**

Data was inserted into SAS and analyzed using logistic regression modeling. All three independent variables were assessed as continuous variables, exposure to smoking was analyzed as a continuous variable due to its ability to give a better picture of the effects of smoking than a simple yes or no. Blood lead levels and serum DDT levels were also assessed as continuous variables to determine a positive or negative association with dementia.

## **Results**

All the analyses were performed as an individual variable and as a multivariate model as well because dementia is known to be a complex disease with multiple influential factors. Exposure to lead was revealed to have a statistically significant negative impact on the digit symbol score (Figure 1), which was the variable that researchers for NHANES used to measure cognitive scores.

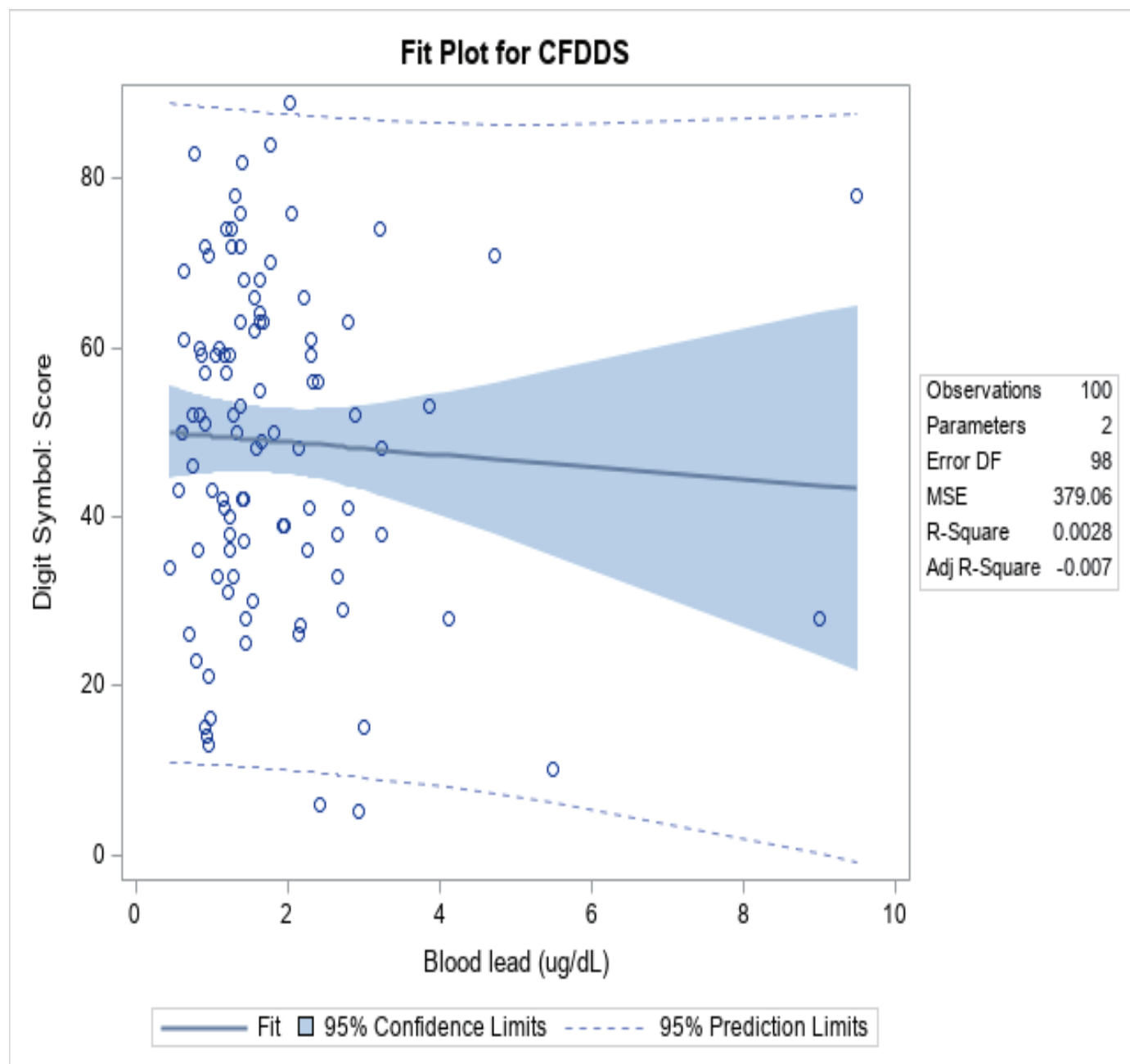
Presence of DDT levels in blood was also significantly correlated with a lower digit symbol score on cognition among subjects (Figure 2). Analysis between serum cotinine levels and digital symbol score were not statistically significant, nor did they reveal any relationship between serum cotinine levels and their impact on digit symbol scores of cognition (Figure 3). Figure 3 also had a relatively low r-squared value of 0.001 which indicates that the observations did not necessarily fit this model well.

The multivariate model was also possibly skewed by the presence of low serum cotinine levels because it revealed no statistically significant relationship between any of the variables and digit symbol score. The multivariate model was not successful in revealing

interaction between these DDT, serum cotinine and blood lead levels among the participants (Figure 4). The findings of figure 4 suggest that there did not exist an interaction between any of the variables of interest and cognitive decline however this does not guarantee that a relationship does not exist outside of this study.

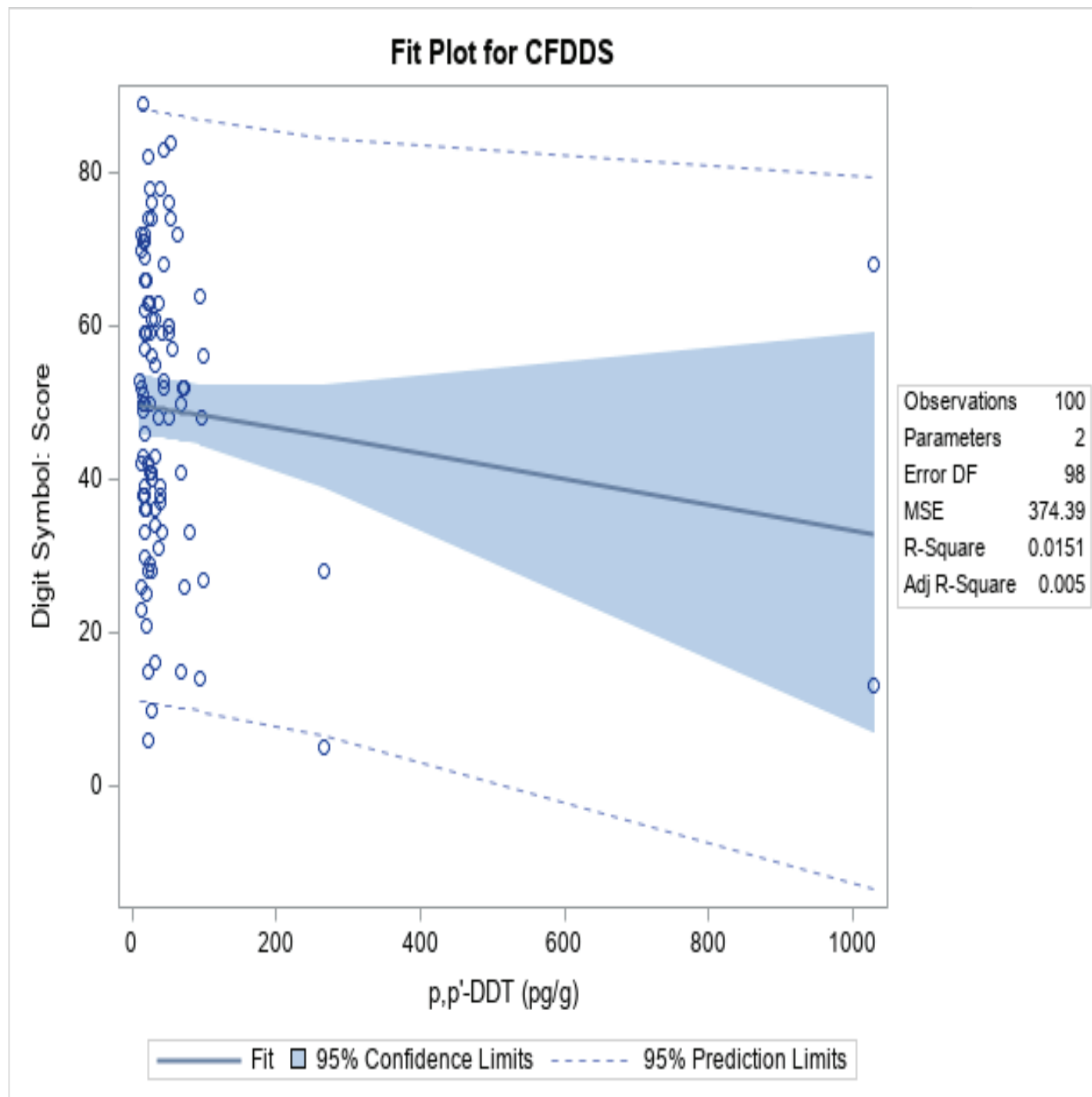
As suspected the analyses between DDT levels in blood and lower cognitive scores. It is potentially interesting that serum cotinine levels in participants were not correlated with lower cognitive scores, especially given the fact that there is a significant amount of previous literature that has shown a correlation between these two variables. One potential explanation for this observation is that there were so few participants with serum cotinine levels above zero present in their system. There were approximately only 8 participants with serum cotinine levels above 0 ng/mL, this potentially heavily skews the results presented by the data. Analysis of the data revealed that levels of DDT in blood was related to a lower digit score, seemingly indicating that DDT does in fact have an influence on lower cognitive functioning in later life. Figure 5 details the distribution of race and ethnicity of the participants. The distribution of participants by race is relatively distributed considering the diversity of race/ethnicity of the United States. Figure 6 details the distribution of participants by age, the age of participants is not evenly distributed due to the NHANES database coding all ages above 80+ to be set to 80.

**Figure 1** Regression model for the relationship between cognitive scores and blood lead levels.

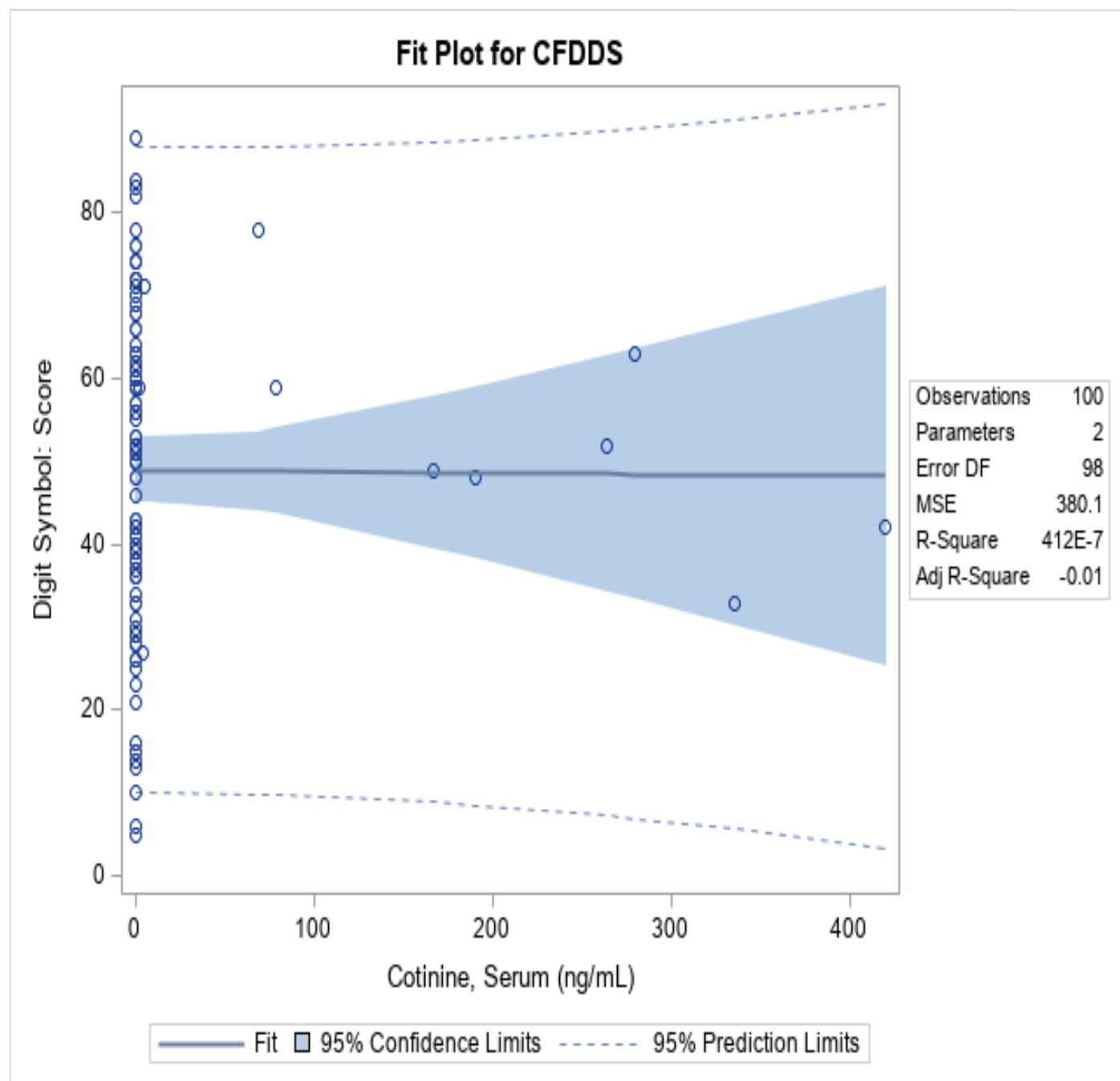




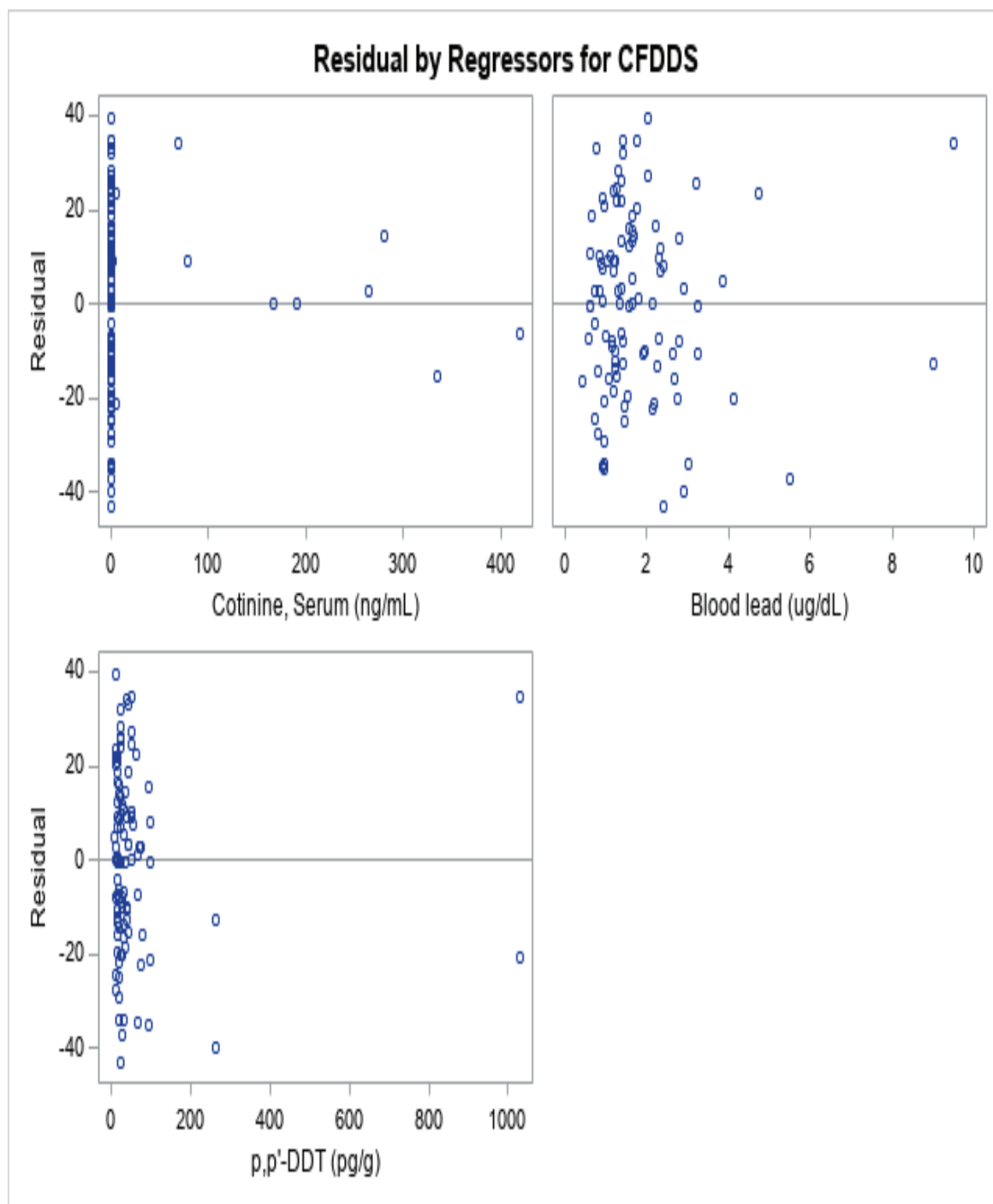
**Figure 2** Regression model for the relationship between cognitive score and levels of DDT in blood samples.



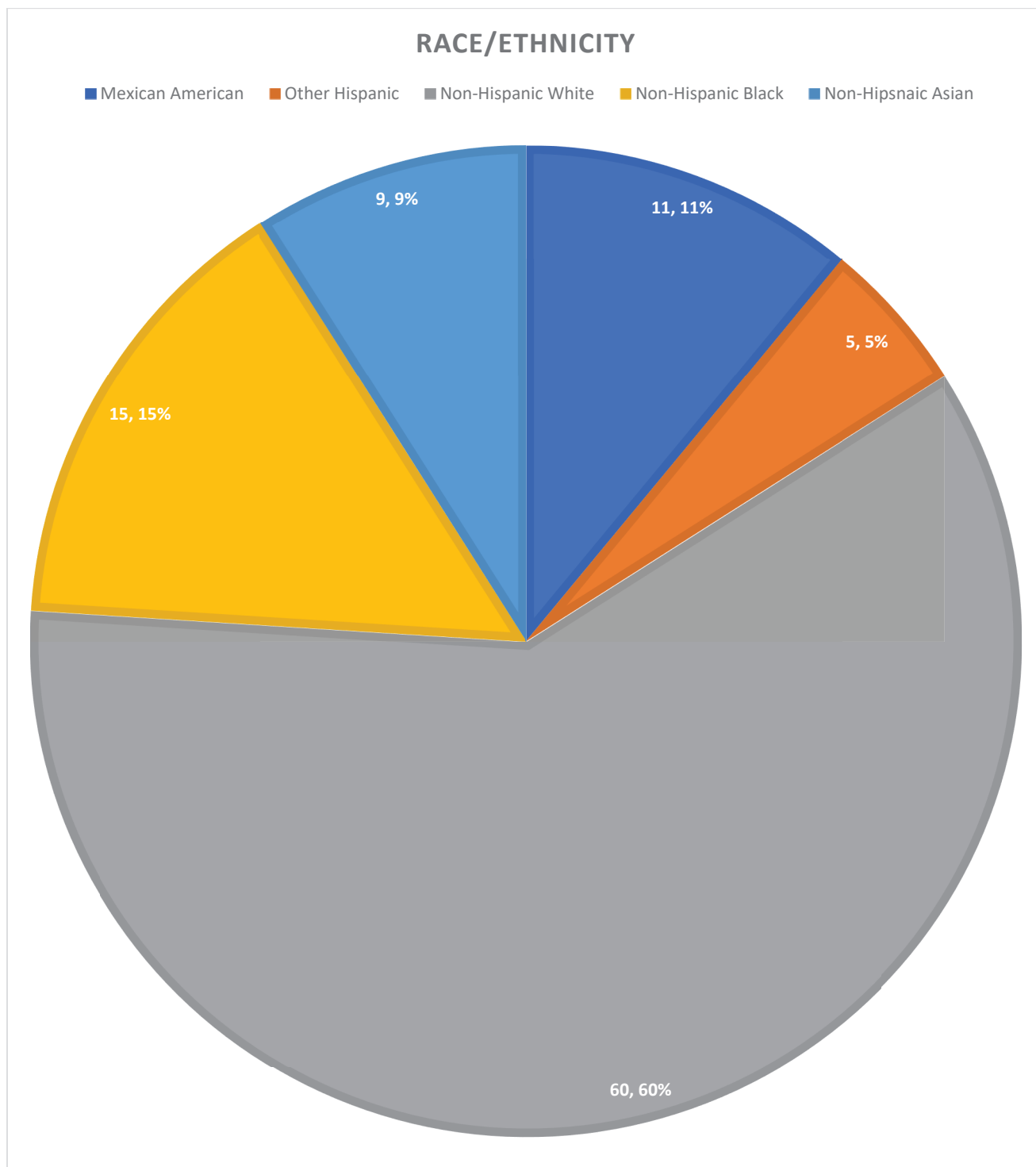
**Figure 3** Regression model for the relationship between cognitive score and serum cotinine levels.



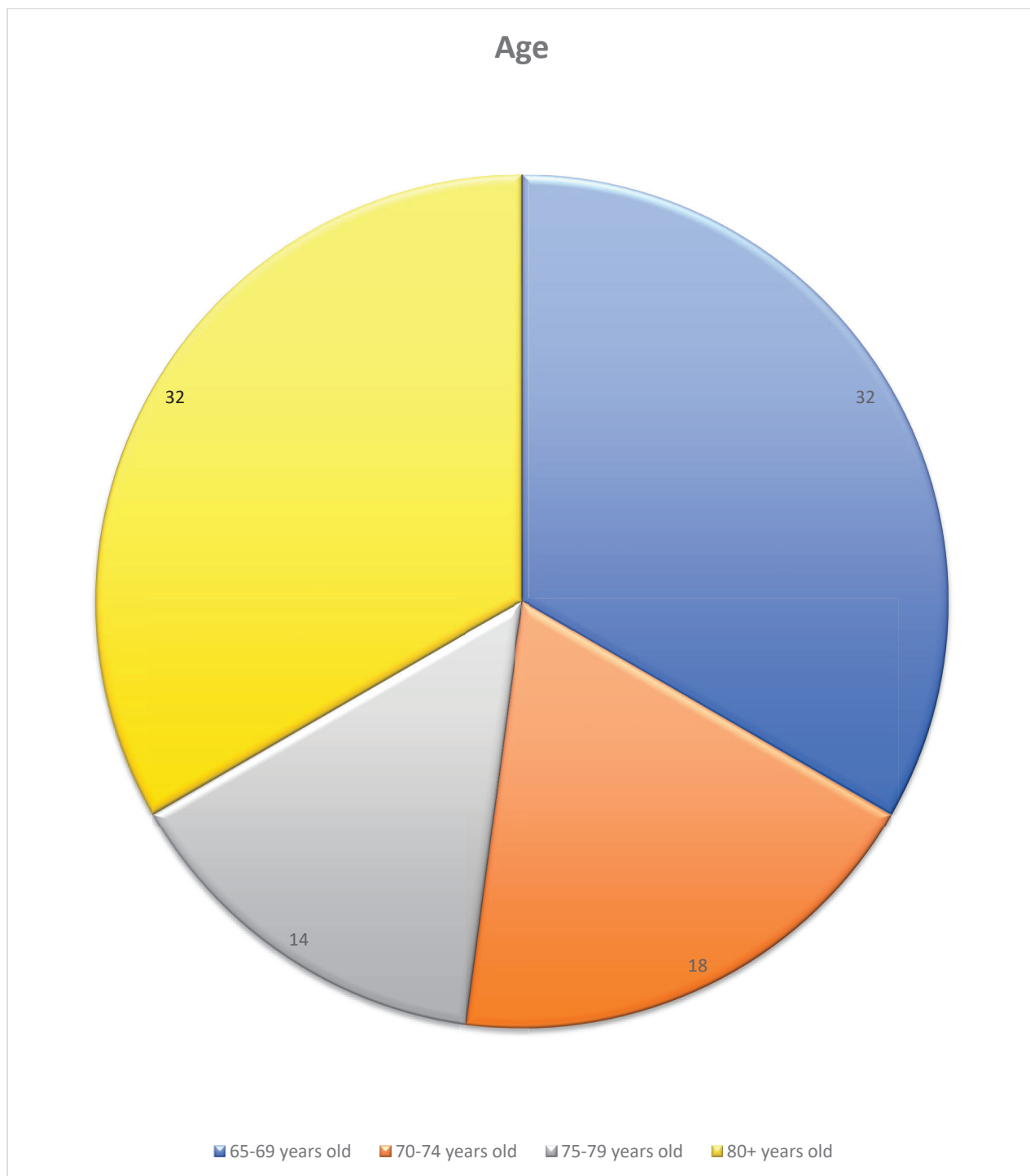
**Figure 4** Regression models for the relationship between cognitive scores serum cotinine, blood lead levels, and DDT levels among participants.



**Figure 5** Demographics of participants by race/ethnicity n=100



**Figure 6** Demographics of participants by age n=100



**Discussion:**

There are a few limitations with this data, the most notable being that only two of the variables of interest were statistically significant, however just because the fact that this data was not able to identify a relationship does not mean one doesn't necessarily exist. It is entirely possible that the data or confounding variables influenced the collected data, making it look like a relationship does not exist despite a relationship being identified in previous literature. One notable strength of this study is the fact that it controlled for age as a confounding variable, age is such an important factor and should always be considered when studying the effects of diminishing cognition. Future investigations into this topic should consider more confounding variables such as race, gender and genetic risk factors however those areas were beyond the scope of this research.

The findings of this study indicate that lead and DDT levels both had statistically significant relationships with lower cognitive scores individually. A multivariate model was constructed and indicated that the variables of this studies interest did not appear to have an interactive relationship among this studies population, however this does not guarantee that these variables do not interact with each other outside of this study.

## References

1. Sherzai, D., & Sherzai, A. (2019). Preventing Alzheimer's: Our Most Urgent Health Care Priority. *American Journal of Lifestyle Medicine*, 13(5), 451–461. doi: 10.1177/1559827619843465
2. Huat, T. J., et al. (2019). "Metal Toxicity Links to Alzheimer's Disease and Neuroinflammation." *J Mol Biol* **431**(9): 1843-1868.
3. Reitz, C. and R. Mayeux (2014). "Alzheimer disease: epidemiology, diagnostic criteria, risk factors and biomarkers." *Biochem Pharmacol* **88**(4): 640-651.
4. Medehouenou, T. C. M., Ayotte, P., Carmichael, P.-H., Kröger, E., Verreault, R., Lindsay, J., ... Laurin, D. (2019). Exposure to polychlorinated biphenyls and organochlorine pesticides and risk of dementia, Alzheimer's disease and cognitive decline in an older population: a prospective analysis from the Canadian Study of Health and Aging. *Environmental Health*, 18(1). doi: 10.1186/s12940-019-0494-2
5. Eid, A., Mhatre, I., & Richardson, J. R. (2019). Gene-environment interactions in Alzheimers disease: A potential path to precision medicine. *Pharmacology & Therapeutics*, 199, 173–187. doi: 10.1016/j.pharmthera.2019.03.005
6. National Collaborating Centre for Mental Health (UK). Dementia: A NICE-SCIE Guideline on Supporting People With Dementia and Their Carers in Health and Social Care. Leicester (UK): British Psychological Society; 2007. (NICE Clinical Guidelines, No. 42.) 4, DEMENTIA. Available from: <https://www.ncbi.nlm.nih.gov/books/NBK55480/>
7. Gauthier, S., Reisberg, B., Zaudig, M., Petersen, R. C., Ritchie, K., Broich, K., ... Winblad, B. (2006). Mild cognitive impairment. *The Lancet*, 367(9518), 1262–1270. doi: 10.1016/s0140-6736(06)68542-5
8. Xiao-Ying Li , Min Zhang\*, Wei Xu, Jie-Qiong Li, Xi-Peng Cao , Jin-Tai Yu \* and Lan Tan\*, "Midlife Modifiable Risk Factors for Dementia: A Systematic Review and Meta-analysis of 34 Prospective Cohort Studies", *Current Alzheimer Research* (2019) 16: 1254. <https://doi.org/10.2174/1567205017666200103111253>
9. Choi, D., Choi, S., & Park, S. M. (2018). Effect of smoking cessation on the risk of dementia: a longitudinal study. *Annals of clinical and translational neurology*, 5(10), 1192–1199. doi:10.1002/acn3.633
10. Nikolac Perkovic M., Pivac N. (2019) Genetic Markers of Alzheimer's Disease. In: Kim YK. (eds) *Frontiers in Psychiatry. Advances in Experimental Medicine and Biology*, vol 1192. Springer, Singapore
11. Cioffi, F., Adam, R., & Broersen, K. (2019). Molecular Mechanisms and Genetics of Oxidative Stress in Alzheimer's Disease. *Journal of Alzheimer's disease : JAD*, 72(4), 981–1017. doi:10.3233/JAD-190863
12. Durazzo, T. C., Mattsson, N., Weiner, M. W., & Alzheimer's Disease Neuroimaging Initiative (2014). Smoking and increased Alzheimer's disease risk: a review of potential mechanisms. *Alzheimer's & dementia : the journal of the Alzheimer's Association*, 10(3 Suppl), S122–S145. <https://doi.org/10.1016/j.jalz.2014.04.009>
13. Swan, G.E., Lessov-Schlaggar, C.N. The Effects of Tobacco Smoke and Nicotine on Cognition and the Brain. *Neuropsychol Rev* 17, 259–273 (2007). <https://doi.org/10.1007/s11065-007-9035-9>

14. Juan, D., Zhou, D.H.D., Li, J., Wang, J.Y.J., Gao, C. and Chen, M. (2004), A 2-year follow-up study of cigarette smoking and risk of dementia. *European Journal of Neurology*, 11: 277-282. doi:10.1046/j.1468-1331.2003.00779.x
15. Sies H. (2000) What is Oxidative Stress?. In: Keaney J.F. (eds) *Oxidative Stress and Vascular Disease. Developments in Cardiovascular Medicine*, vol 224. Springer, Boston, MA
16. Ko, K., Kwon, M. J., Yang, S. H., Moon, C. J., Lee, E. H., Woo, H. Y., & Park, H. (2016). Evaluation of Serum Cotinine Cut-Off to Distinguish Smokers From Nonsmokers in the Korean Population. *Annals of laboratory medicine*, 36(5), 427–433. <https://doi.org/10.3343/alm.2016.36.5.427>
17. Benowitz, N. L., Hukkanen, J., & Jacob, P., 3rd (2009). Nicotine chemistry, metabolism, kinetics and biomarkers. *Handbook of experimental pharmacology*, (192), 29–60. [https://doi.org/10.1007/978-3-540-69248-5\\_2](https://doi.org/10.1007/978-3-540-69248-5_2)
18. Bihagi, S. W., Bahmani, A., Subaiea, G. M., & Zawia, N. H. (2014). Infantile exposure to lead and late-age cognitive decline: relevance to AD. *Alzheimer's & dementia : the journal of the Alzheimer's Association*, 10(2), 187–195. <https://doi.org/10.1016/j.jalz.2013.02.012>
19. Marc G. Weisskopf, Robert O. Wright, Joel Schwartz, Avron Spiro, III, David Sparrow, Antonio Aro, Howard Hu, Cumulative Lead Exposure and Prospective Change in Cognition among Elderly Men: The VA Normative Aging Study, *American Journal of Epidemiology*, Volume 160, Issue 12, 15 December 2004, Pages 1184–1193, <https://doi.org/10.1093/aje/kwh333>
20. Bleecker ML, Lindgren KN, Ford DP. Differential contribution of current and cumulative indices of lead dose to neuropsychological performance by age. *Neurology* 1997;48:639–45.
21. Fiedler N, Weisel C, Lynch R, et al. Cognitive effects of chronic exposure to lead and solvents. *Am J Ind Med* 2003;44:413–23.
22. Stewart WF, Schwartz BS, Simon D, et al. Neurobehavioral function and tibial and chelatable lead levels in 543 former organolead workers. *Neurology* 1999;52:1610–17.
23. Wani, A. L., Ara, A., & Usmani, J. A. (2015). Lead toxicity: a review. *Interdisciplinary toxicology*, 8(2), 55–64. <https://doi.org/10.1515/intox-2015-0009>
24. Barbosa, F., Jr, Tanus-Santos, J. E., Gerlach, R. F., & Parsons, P. J. (2005). A critical review of biomarkers used for monitoring human exposure to lead: advantages, limitations, and future needs. *Environmental health perspectives*, 113(12), 1669–1674. <https://doi.org/10.1289/ehp.7917>
25. Nemsadze K, Sanikidze T, Ratiani L, Gabunia L, Sharashenidze T. Mechanisms of lead-induced poisoning. *Georgian Med News*. 2009 Jul-Aug;(172-173):92-6. Review. PubMed PMID: 19644200.
26. Yan, D., Zhang, Y., Liu, L., & Yan, H. (2016). Pesticide exposure and risk of Alzheimer's disease: a systematic review and meta-analysis. *Scientific reports*, 6, 32222. <https://doi.org/10.1038/srep32222>
27. Hayden KM, Norton MC, Darcey D, Østbye T, Zandi PP, Breitner JCS, et al. Occupational exposure to pesticides increases the risk of incident AD The Cache County Study. *Neurology*. 2010;74(19 ):1524–30.



28. Richardson, J. R., Roy, A., Shalat, S. L., Stein, R. T. V., Hossain, M. M., Buckley, B., ... German, D. C. (2014). Elevated Serum Pesticide Levels and Risk for Alzheimer Disease. *JAMA Neurology*, *71*(3), 284. doi: 10.1001/jamaneurol.2013.6030
29. Franco, R., Li, S., Rodriguez-Rocha, H., Burns, M., & Panayiotidis, M. I. (2010). Molecular mechanisms of pesticide-induced neurotoxicity: Relevance to Parkinson's disease. *Chemico-biological interactions*, *188*(2), 289–300. <https://doi.org/10.1016/j.cbi.2010.06.003>
30. Anwar W. A. (1997). Biomarkers of human exposure to pesticides. *Environmental health perspectives*, *105 Suppl 4*(Suppl 4), 801–806. <https://doi.org/10.1289/ehp.97105s4801>
31. Rabinowitz M. B. (1991). Toxicokinetics of bone lead. *Environmental health perspectives*, *91*, 33–37. doi:10.1289/ehp.919133
32. Hugo, J., & Ganguli, M. (2014). Dementia and cognitive impairment: epidemiology, diagnosis, and treatment. *Clinics in geriatric medicine*, *30*(3), 421–442. doi:10.1016/j.cger.2014.04.001