

Appendix

Figure 1.1: Atlanta Census Tracts (2010, 2011, 2012)

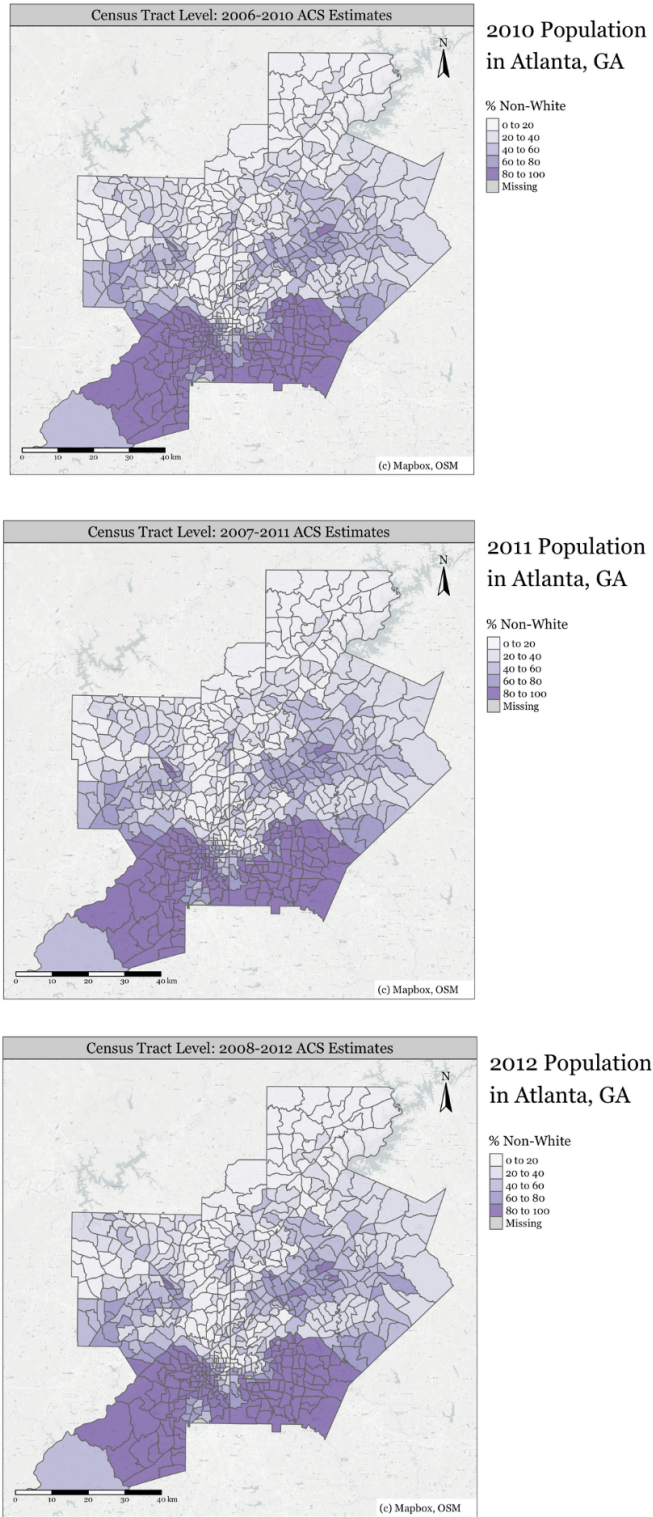


Figure 1.2: Atlanta Census Tracts (2013, 2014, 2015)

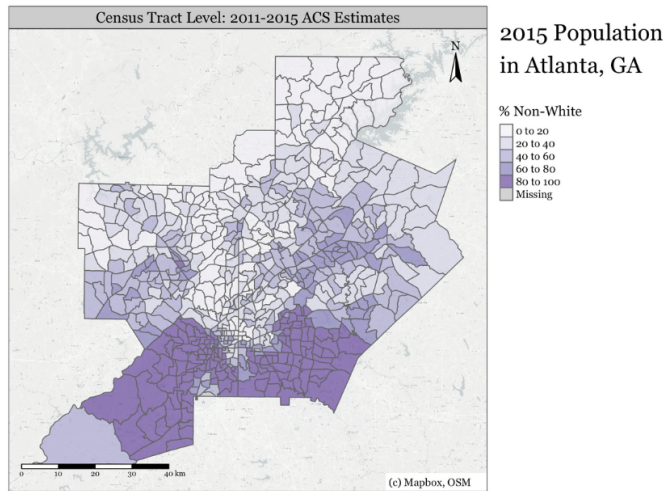
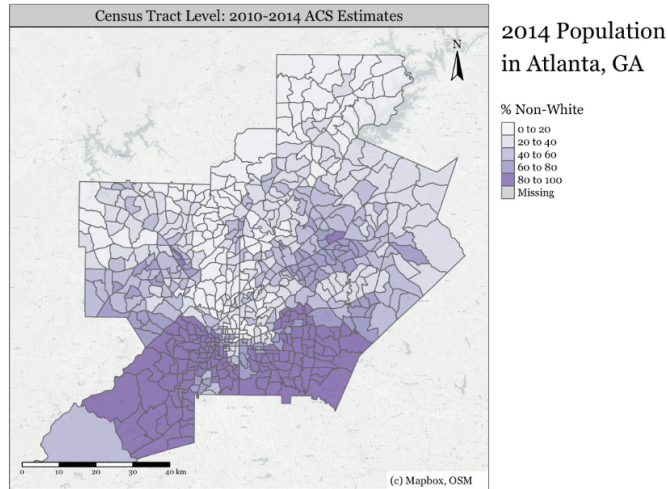
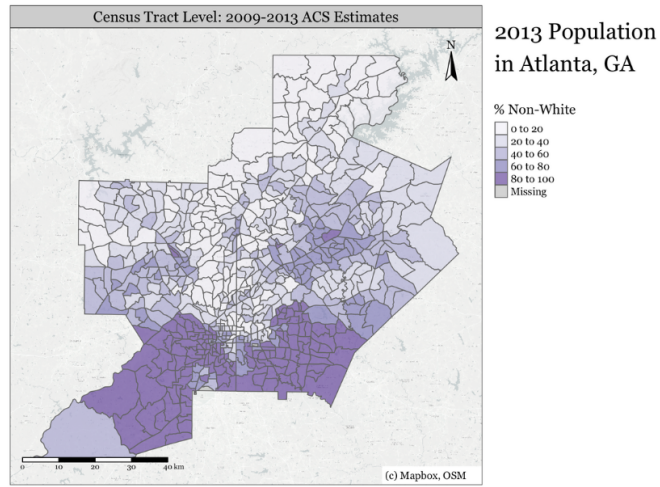


Figure 1.3: Atlanta Census Tracts (2016, 2017, 2018)

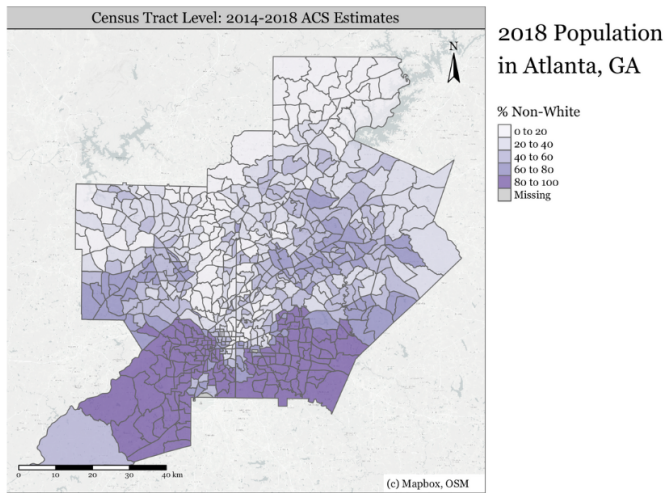
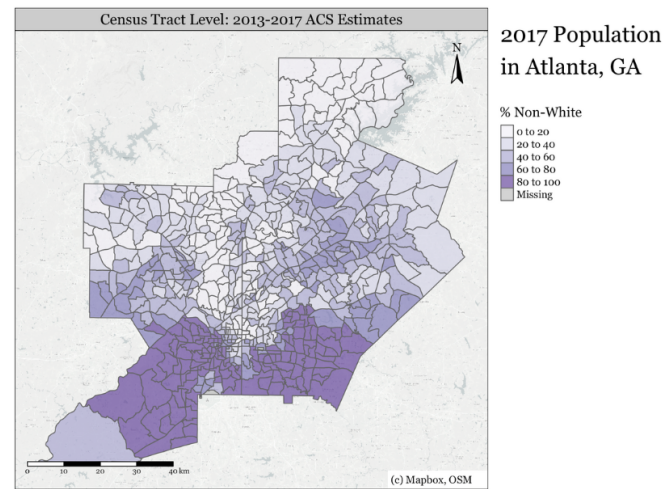
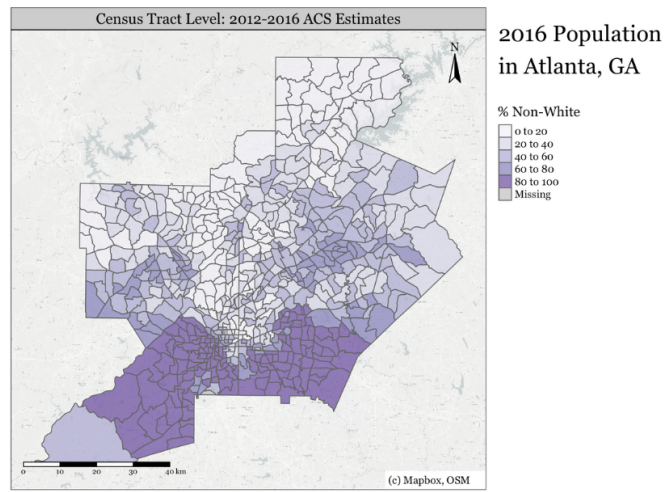


Figure 1.4: Atlanta Census Tracts (2019, 2020, 2021)

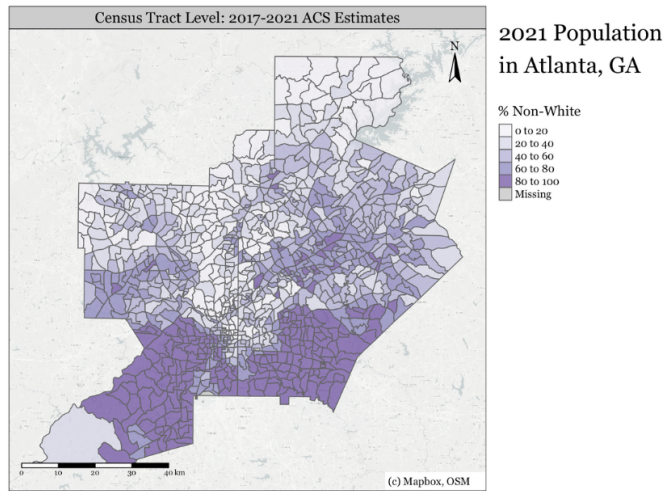
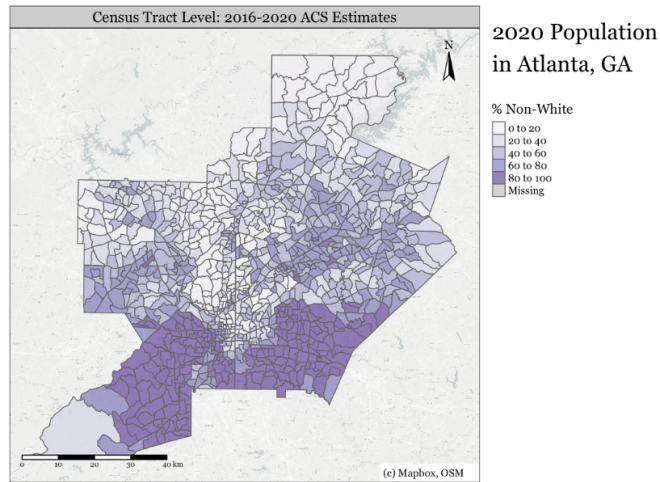
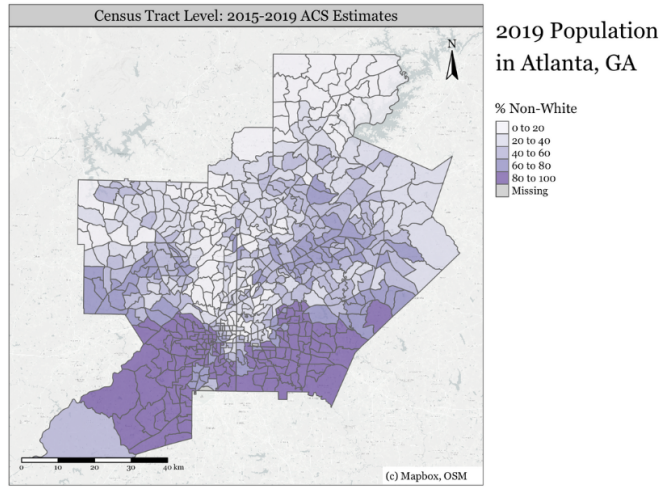


Figure 1.5: Atlanta Census Tracts (2010, 2011, 2012)

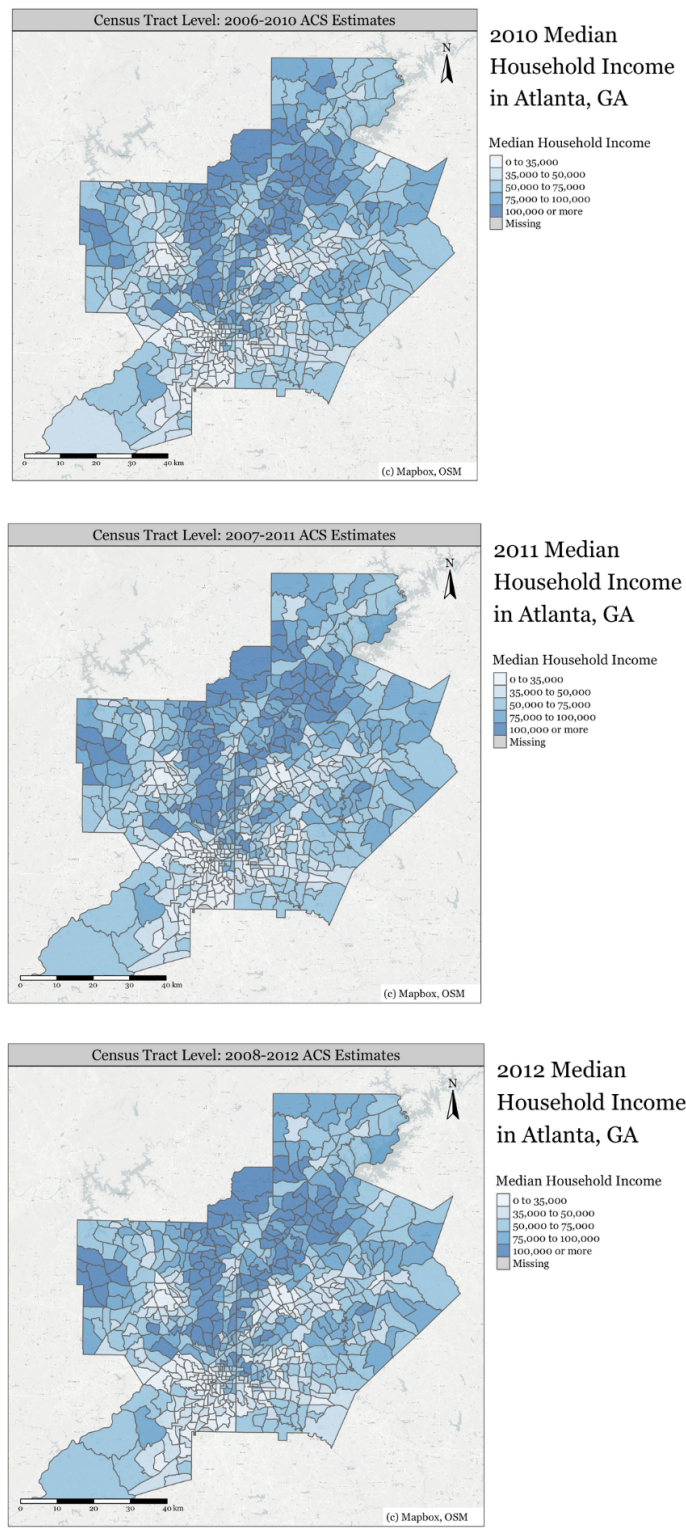


Figure 1.6: Atlanta Census Tracts (2013, 2014, 2015)

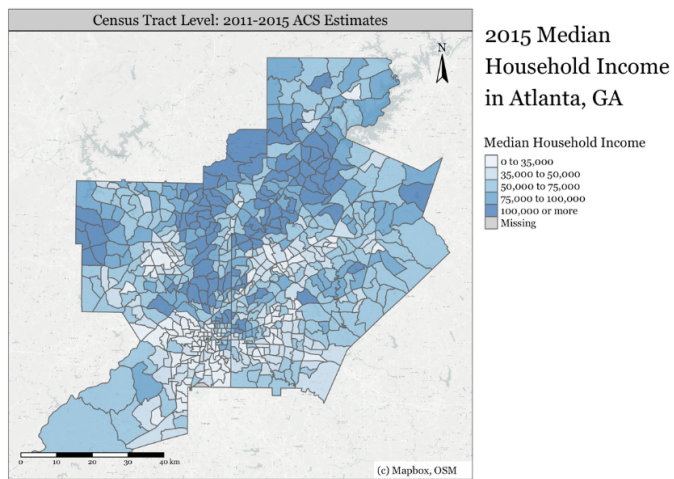
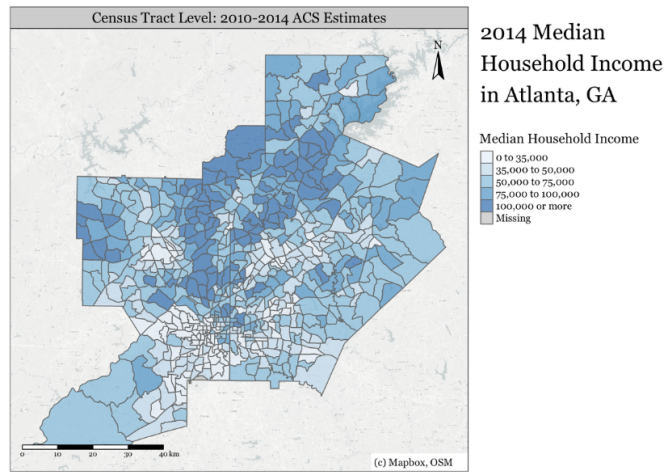
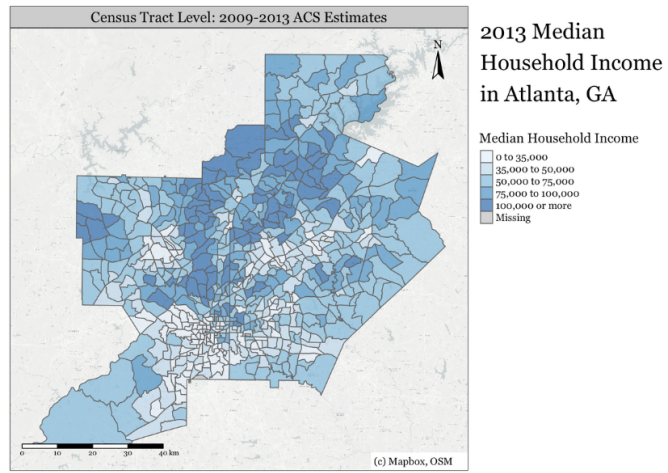


Figure 1.7: Atlanta Census Tracts (2016, 2017, 2018)

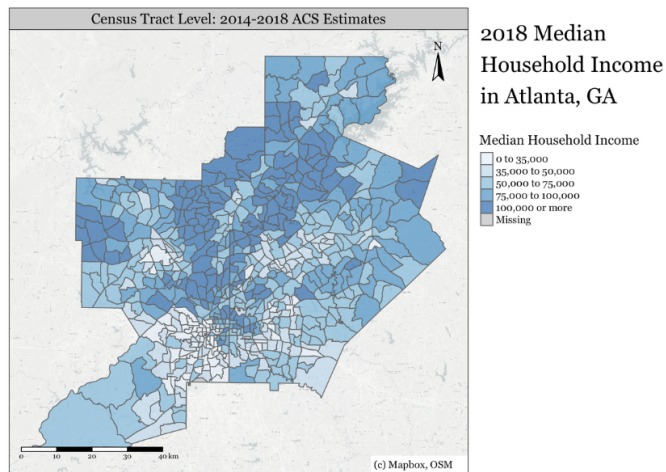
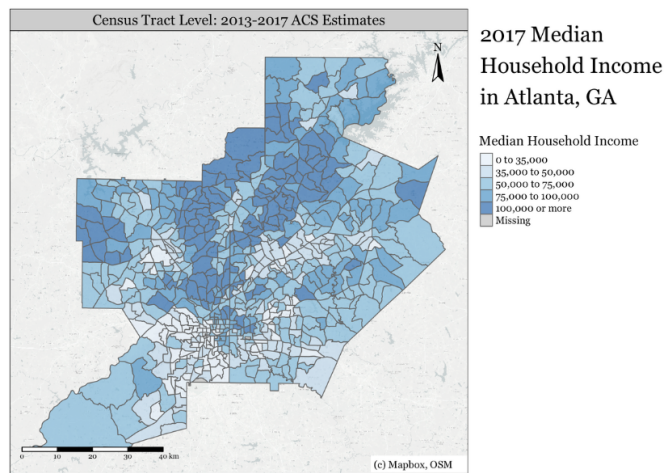
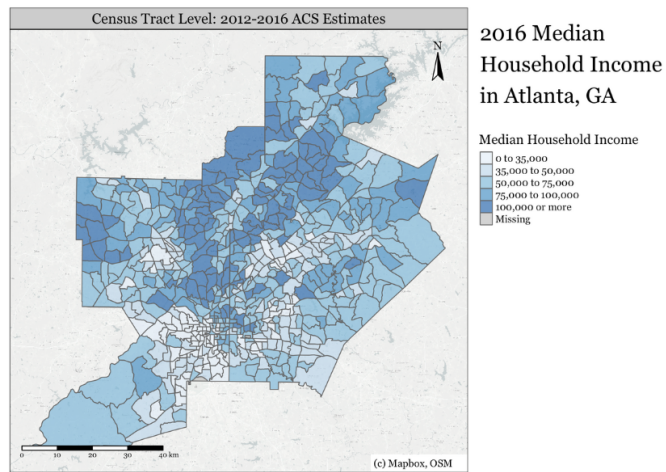


Figure 1.8: Atlanta Census Tracts (2019, 2020, 2021)

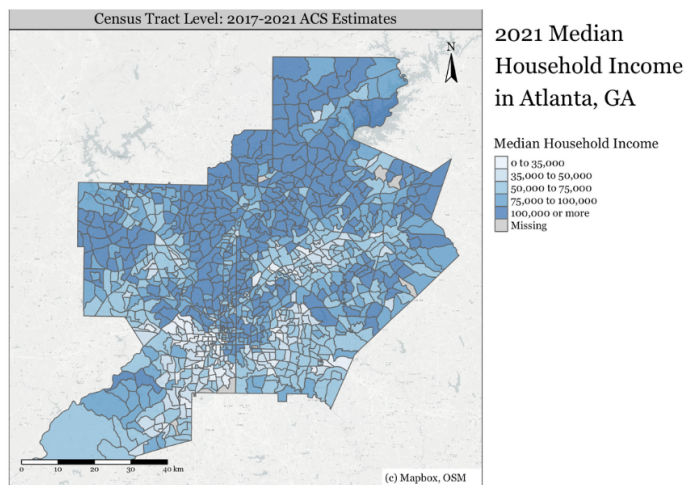
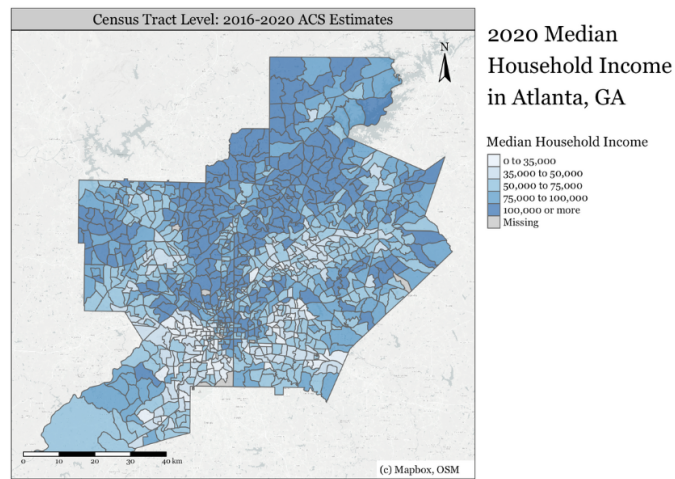
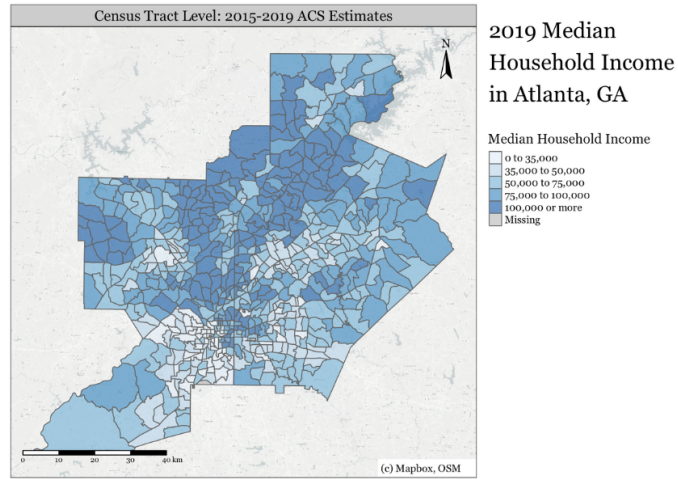


Figure 1.9: Atlanta Census Tracts (2010, 2011, 2012)

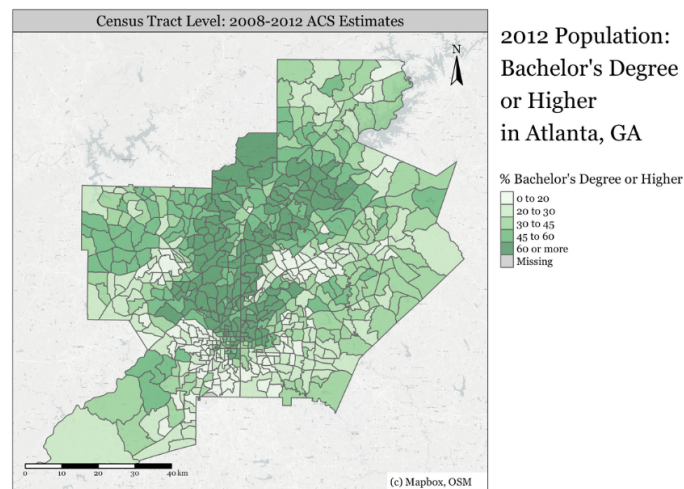
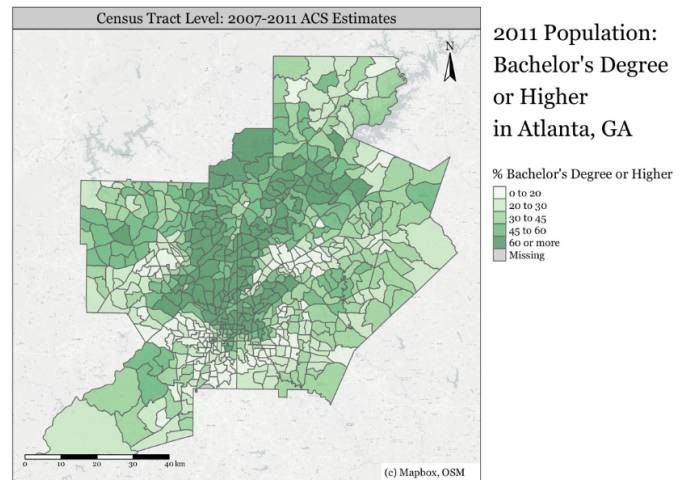
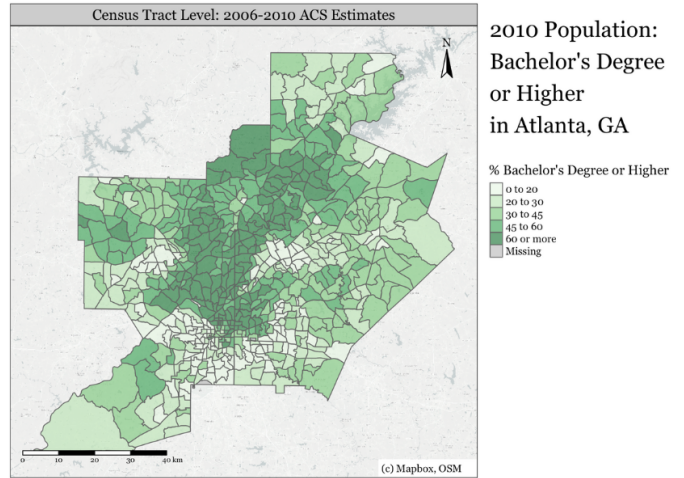


Figure 1.10: Atlanta Census Tracts (2013, 2014, 2015)

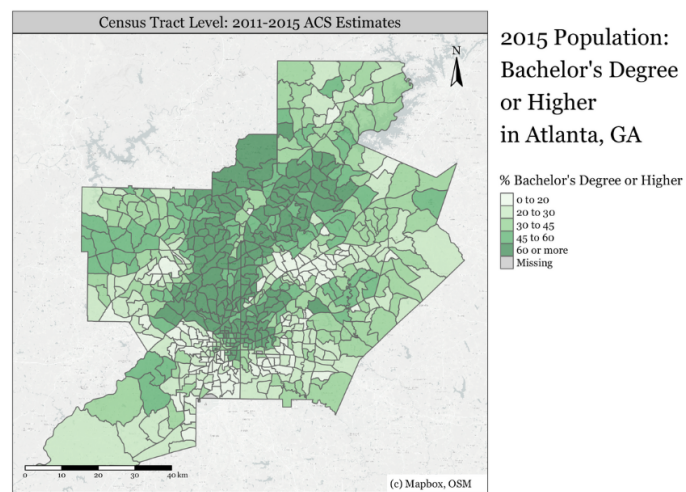
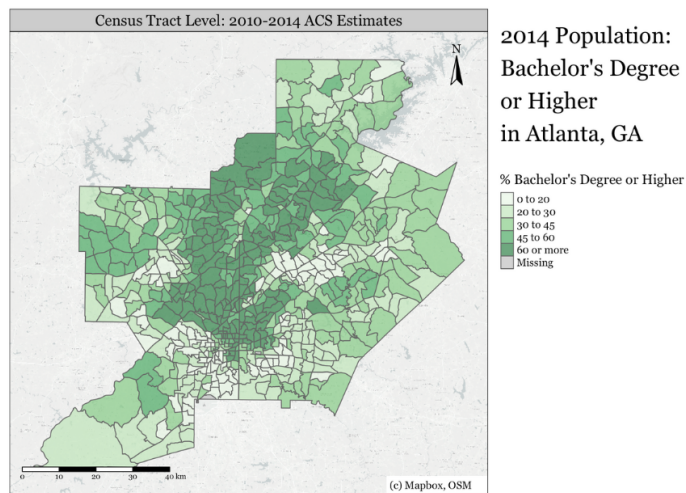
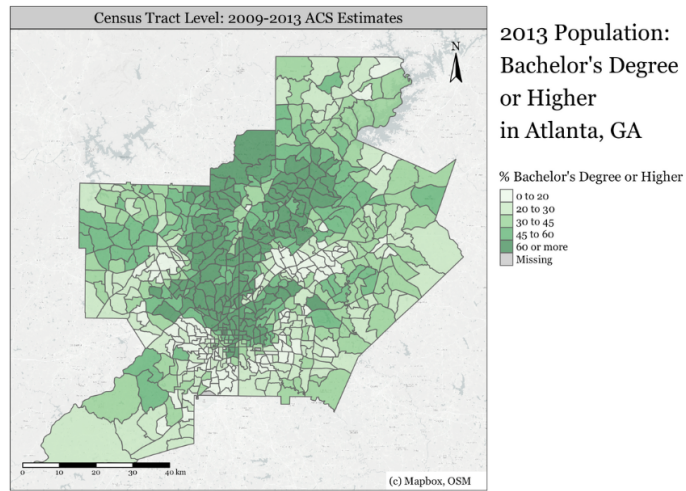


Figure 1.11: Atlanta Census Tracts (2016, 2017, 2018)

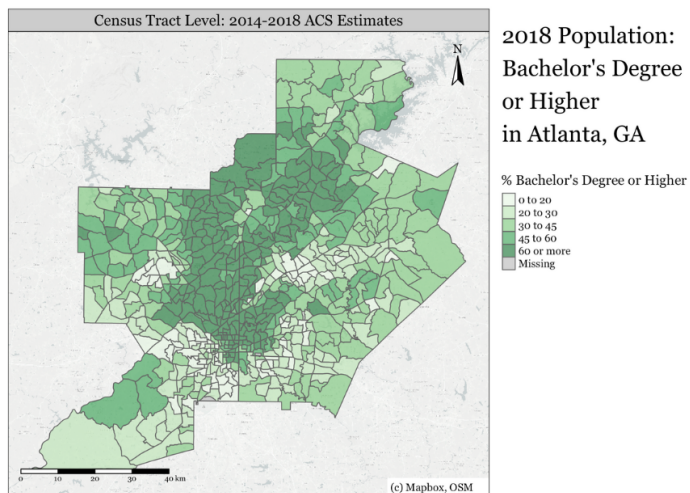
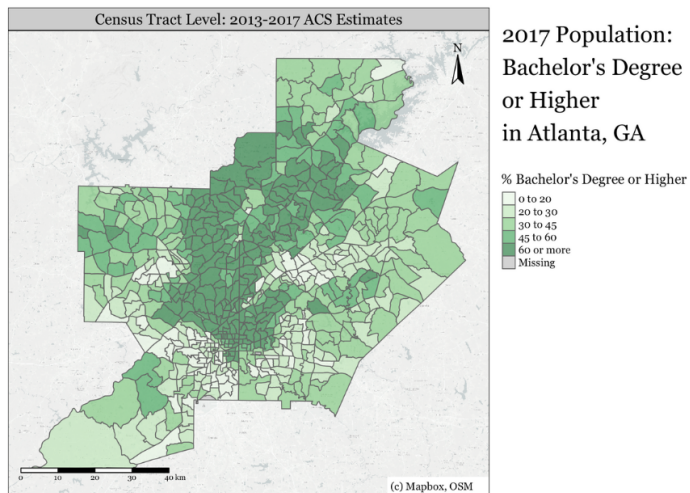
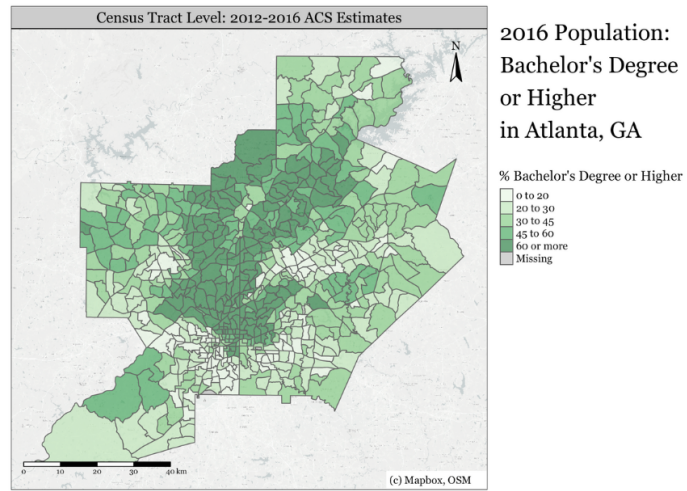


Figure 1.12: Atlanta Census Tracts (2019, 2020, 2021)

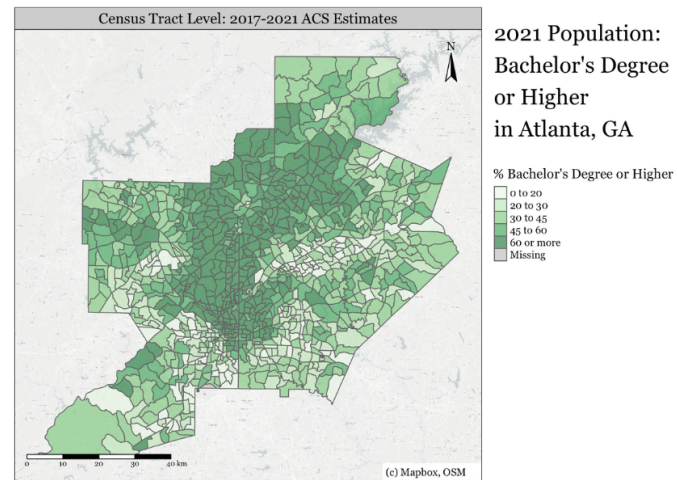
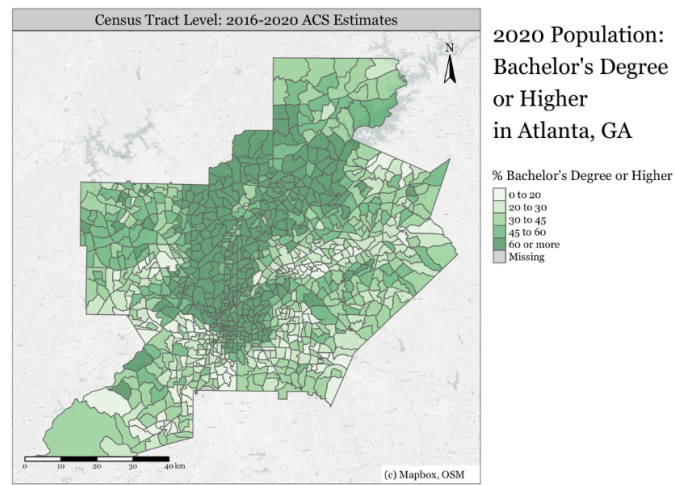
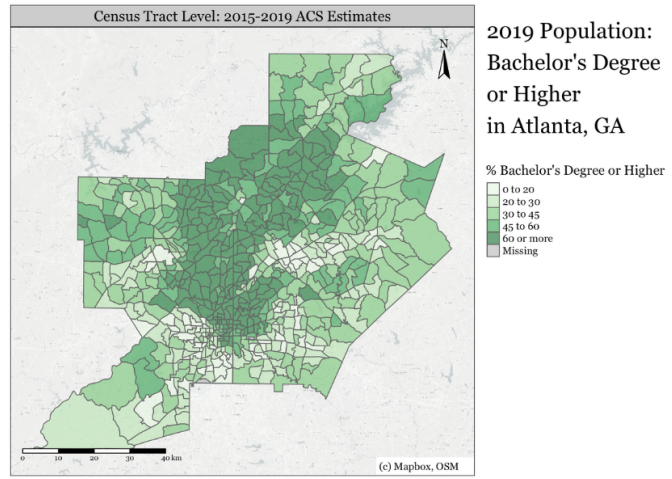


Figure 2.1: Internet Speeds and Race (2010, 2011, 2012)

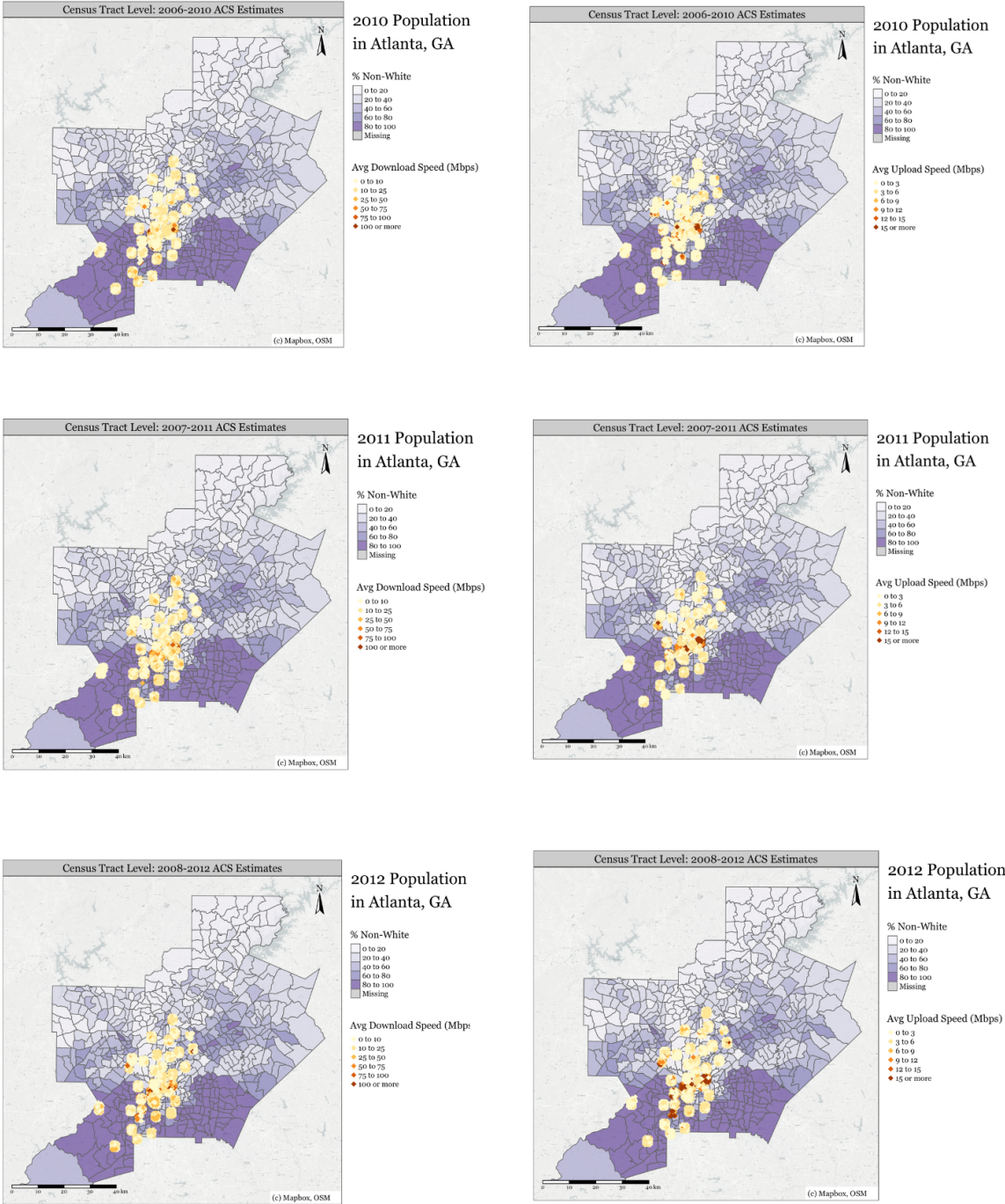


Figure 2.2: Internet Speeds and Race (2013, 2014, 2015)

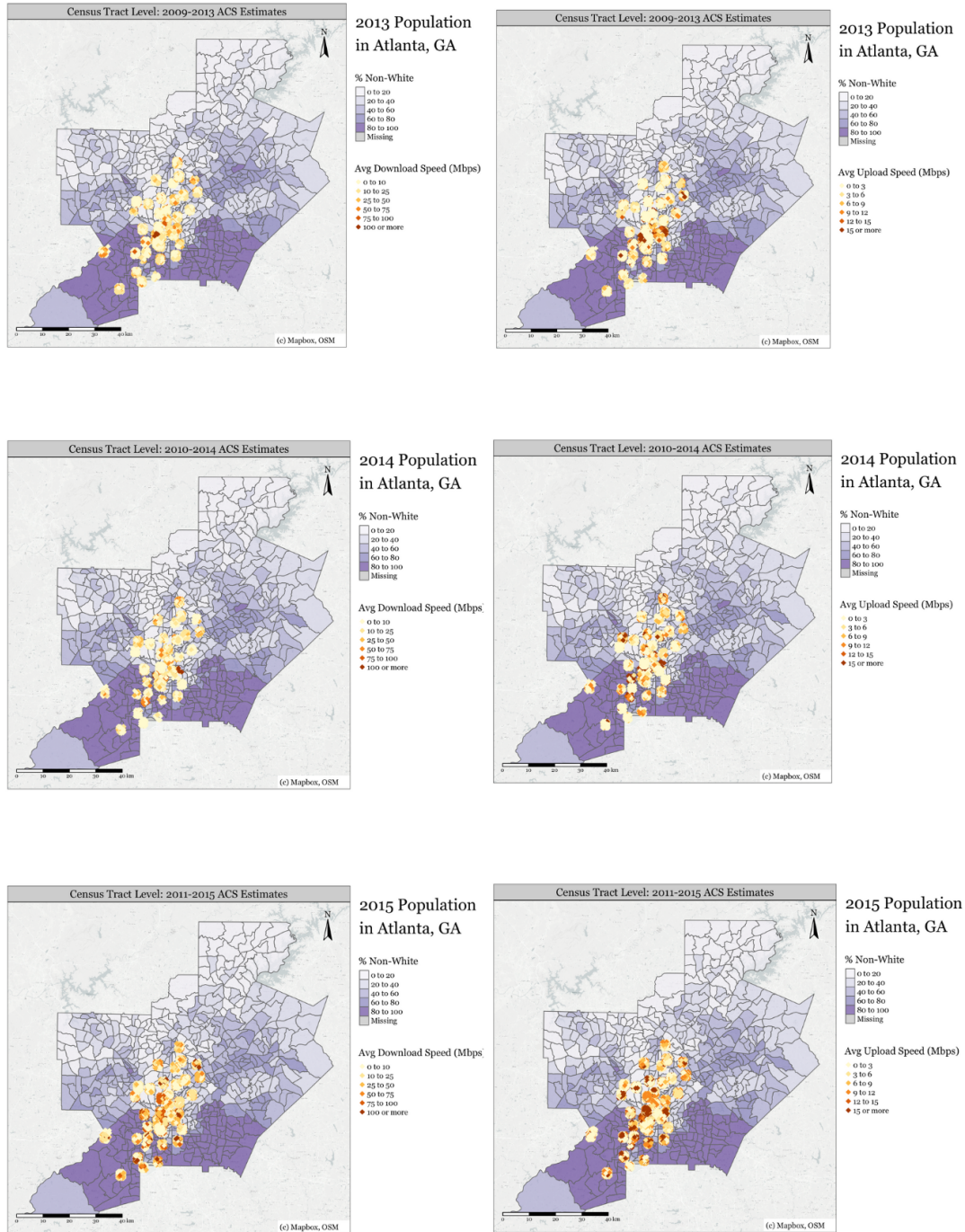


Figure 2.3: Internet Speeds and Race (2016, 2017, 2018)

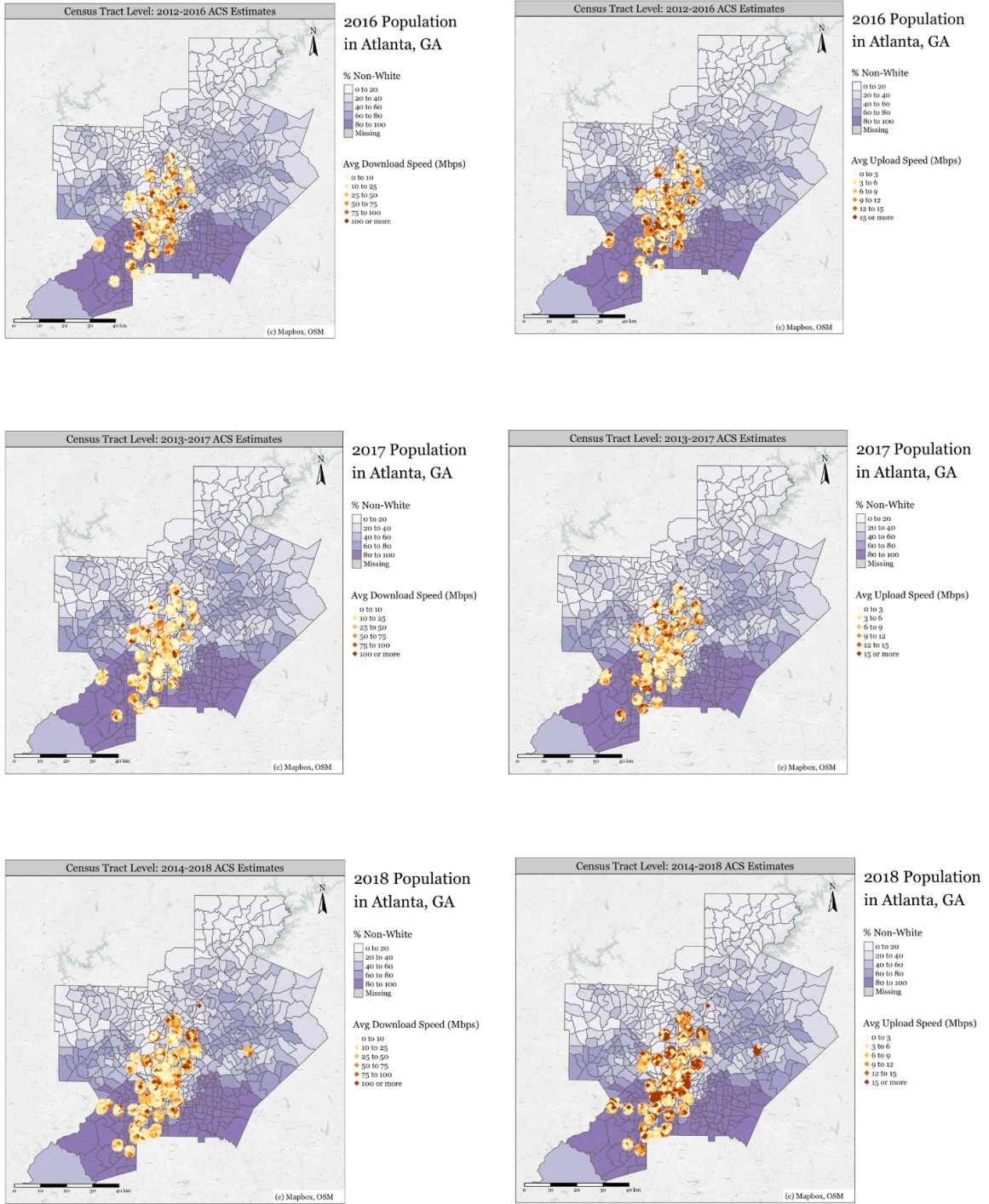


Figure 2.4: Internet Speeds and Race (2019, 2020, 2021)

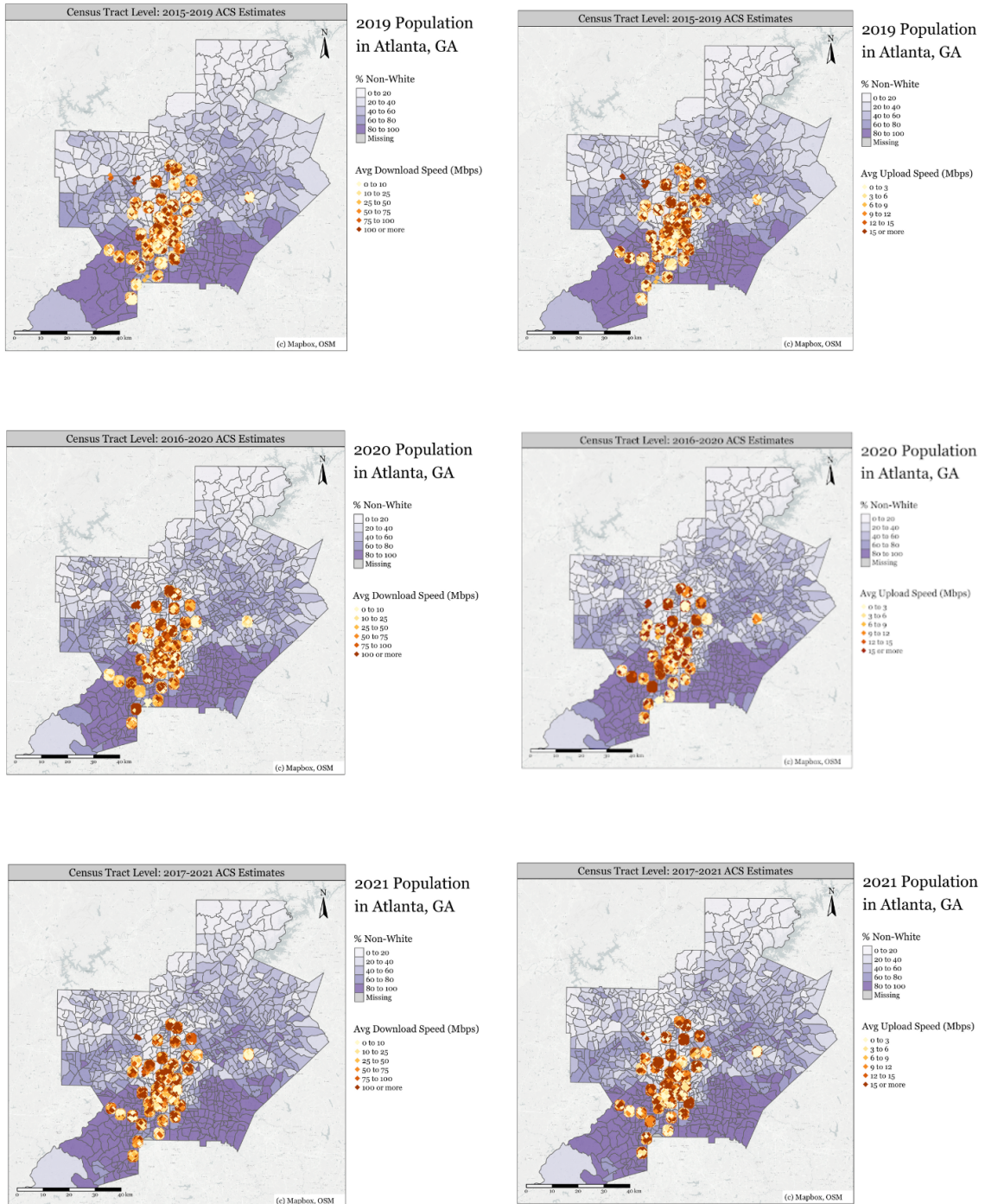


Figure 3.1: Internet Speeds and Income (2010, 2011, 2012)

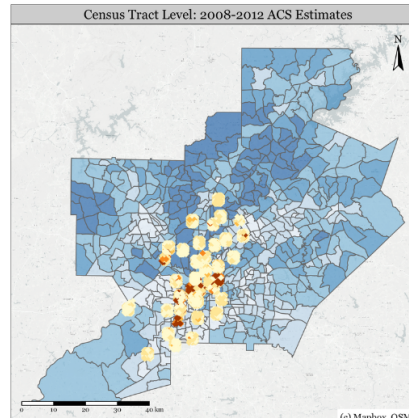
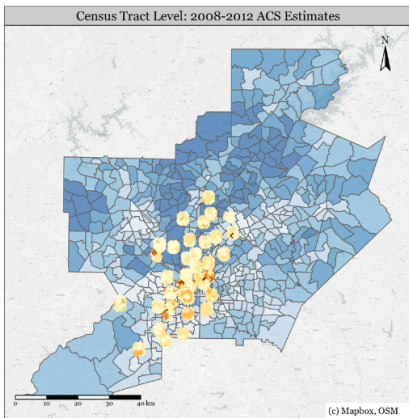
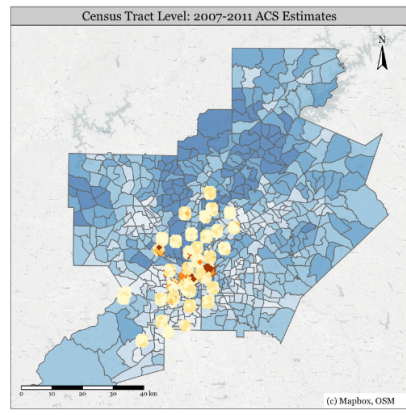
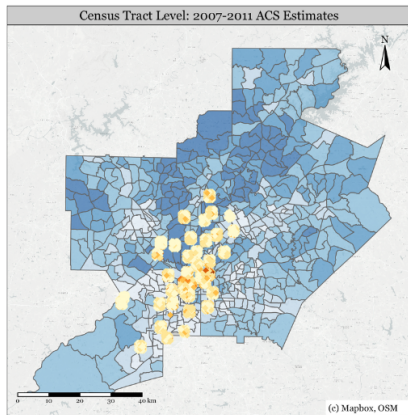
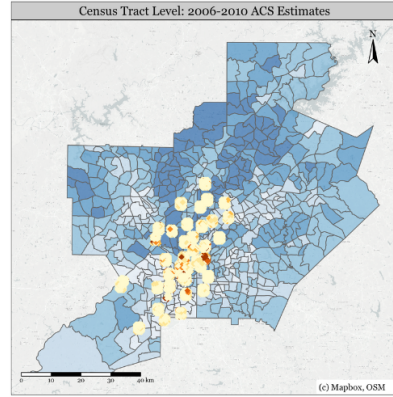
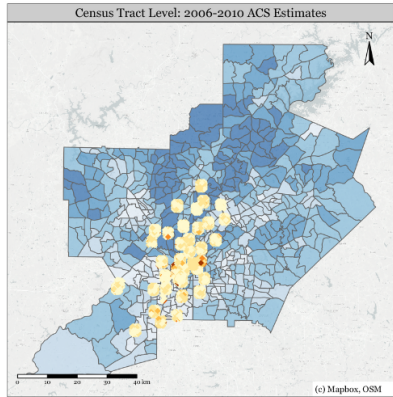


Figure 3.2: Internet Speeds and Income (2013, 2014, 2015)

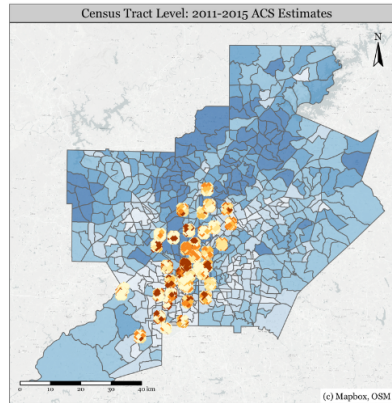
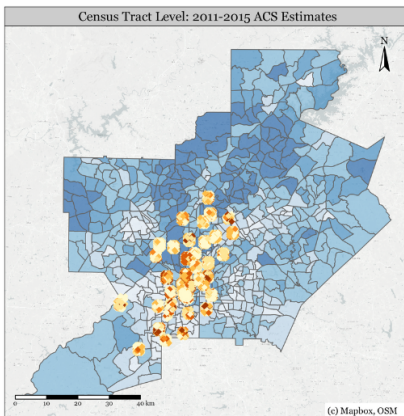
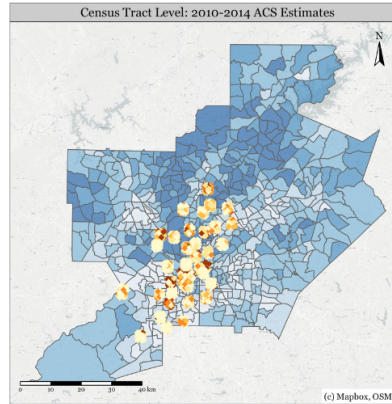
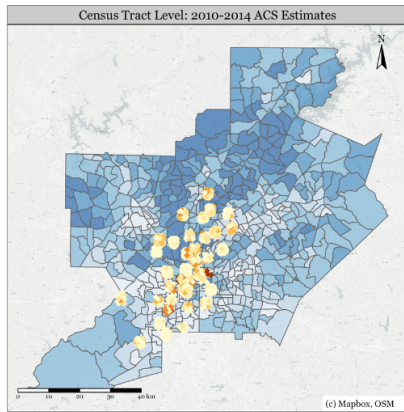
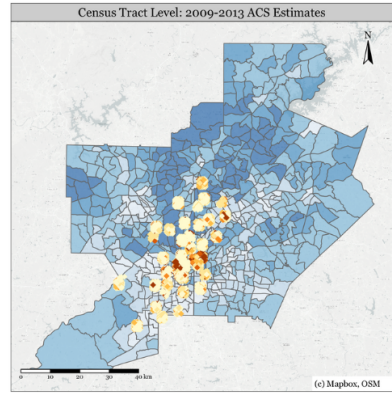
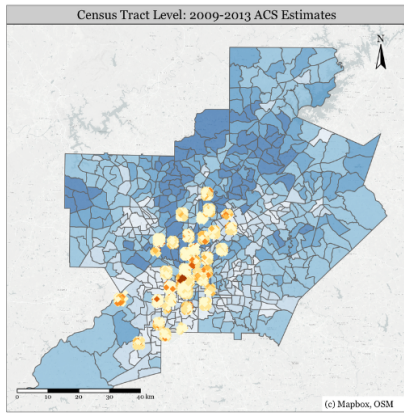


Figure 3.3: Internet Speeds and Income (2016, 2017, 2018)

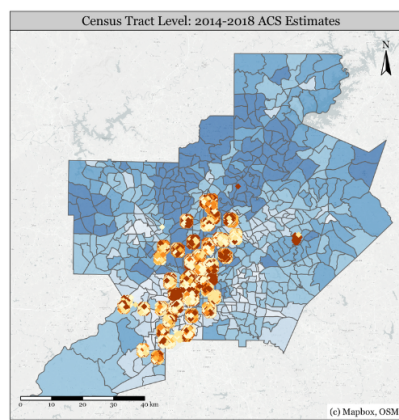
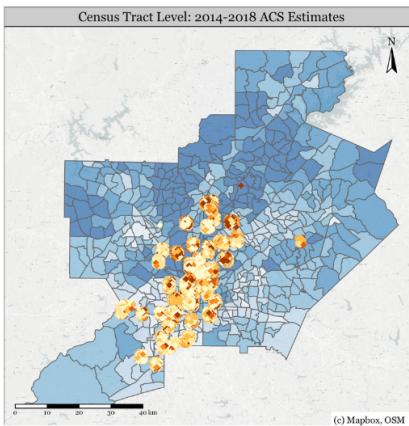
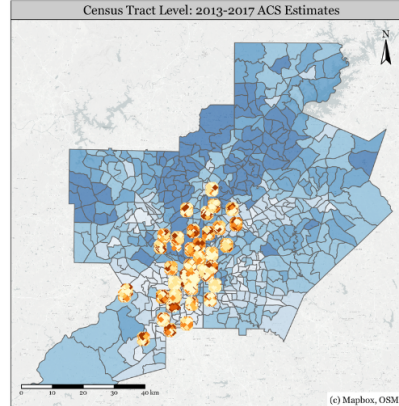
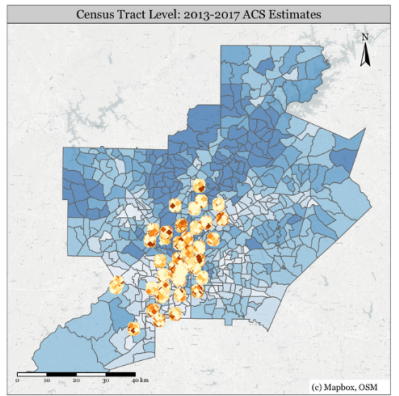
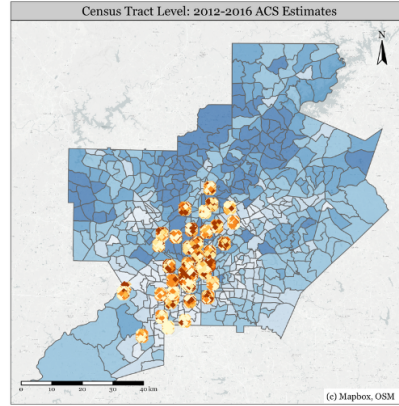
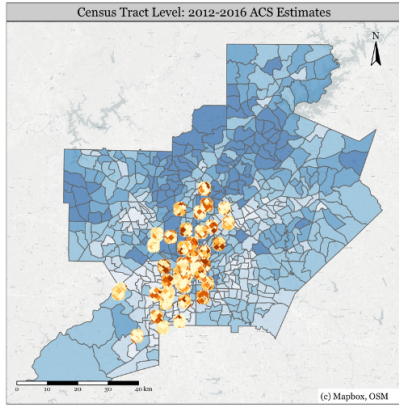


Figure 3.4: Internet Speeds and Income (2019, 2020, 2021)

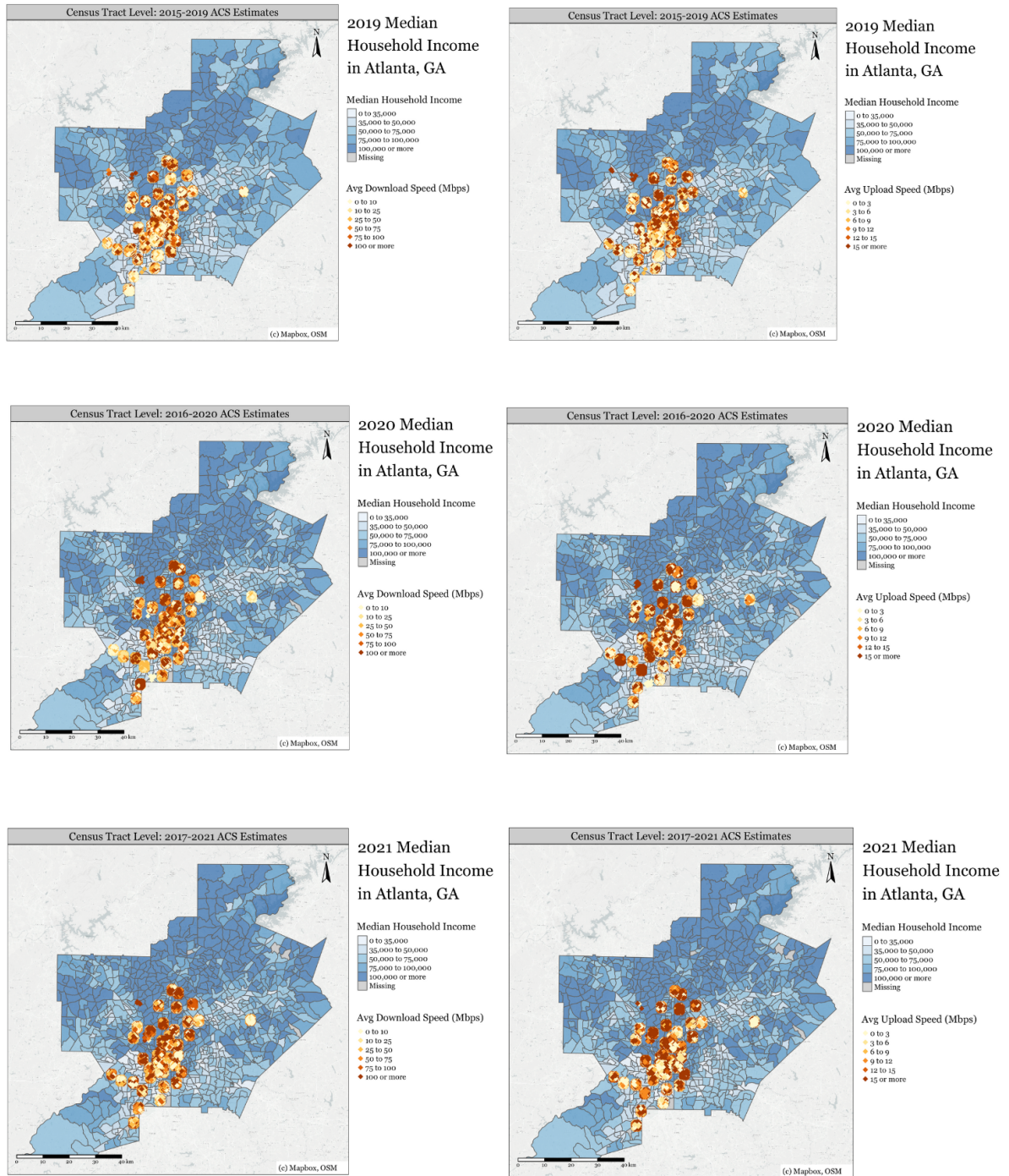


Figure 4.1: Internet Speeds and Educational Attainment (2010, 2011, 2012)

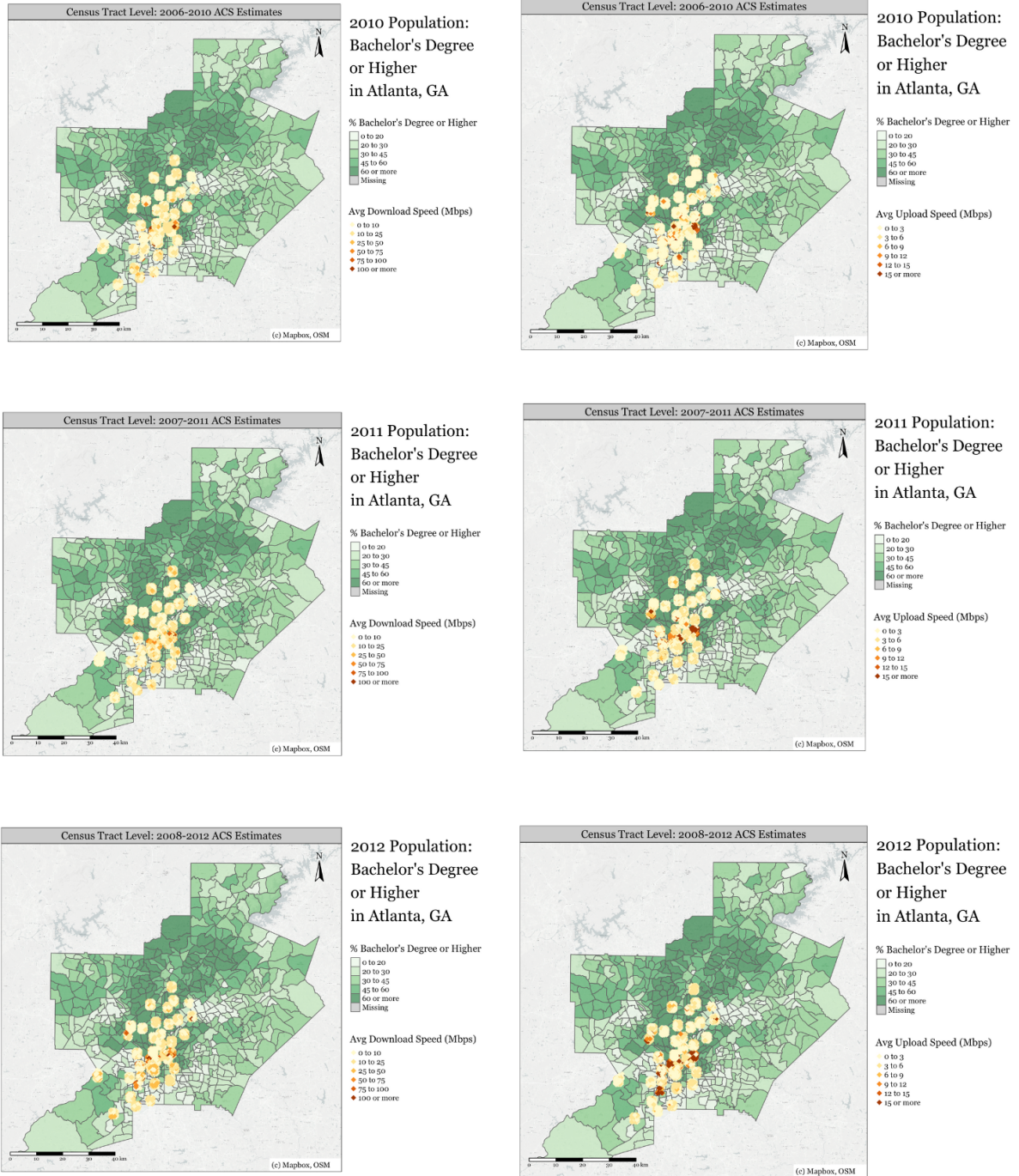


Figure 4.2: Internet Speeds and Educational Attainment (2013, 2014, 2015)

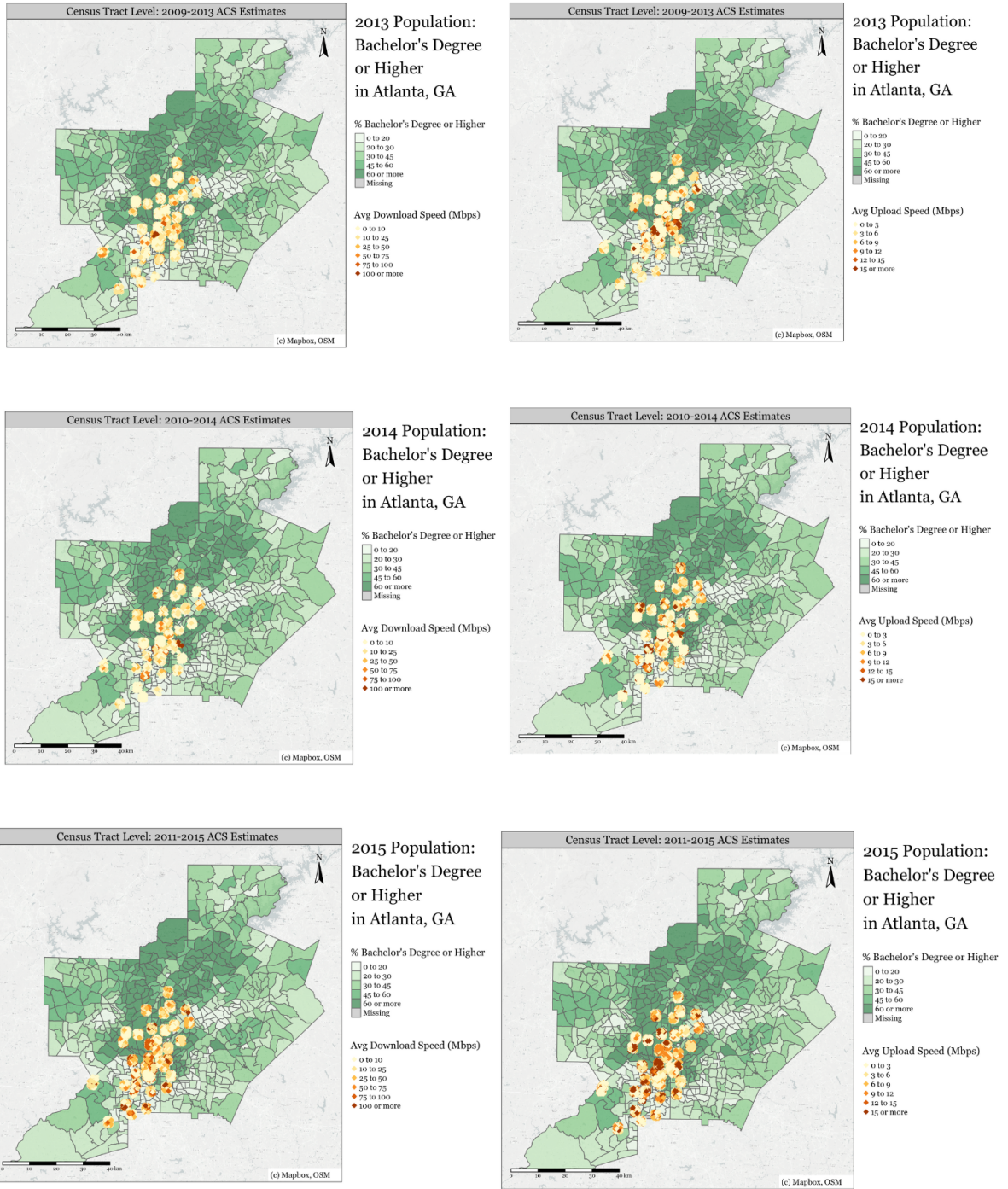


Figure 4.3: Internet Speeds and Educational Attainment (2016, 2017, 2018)

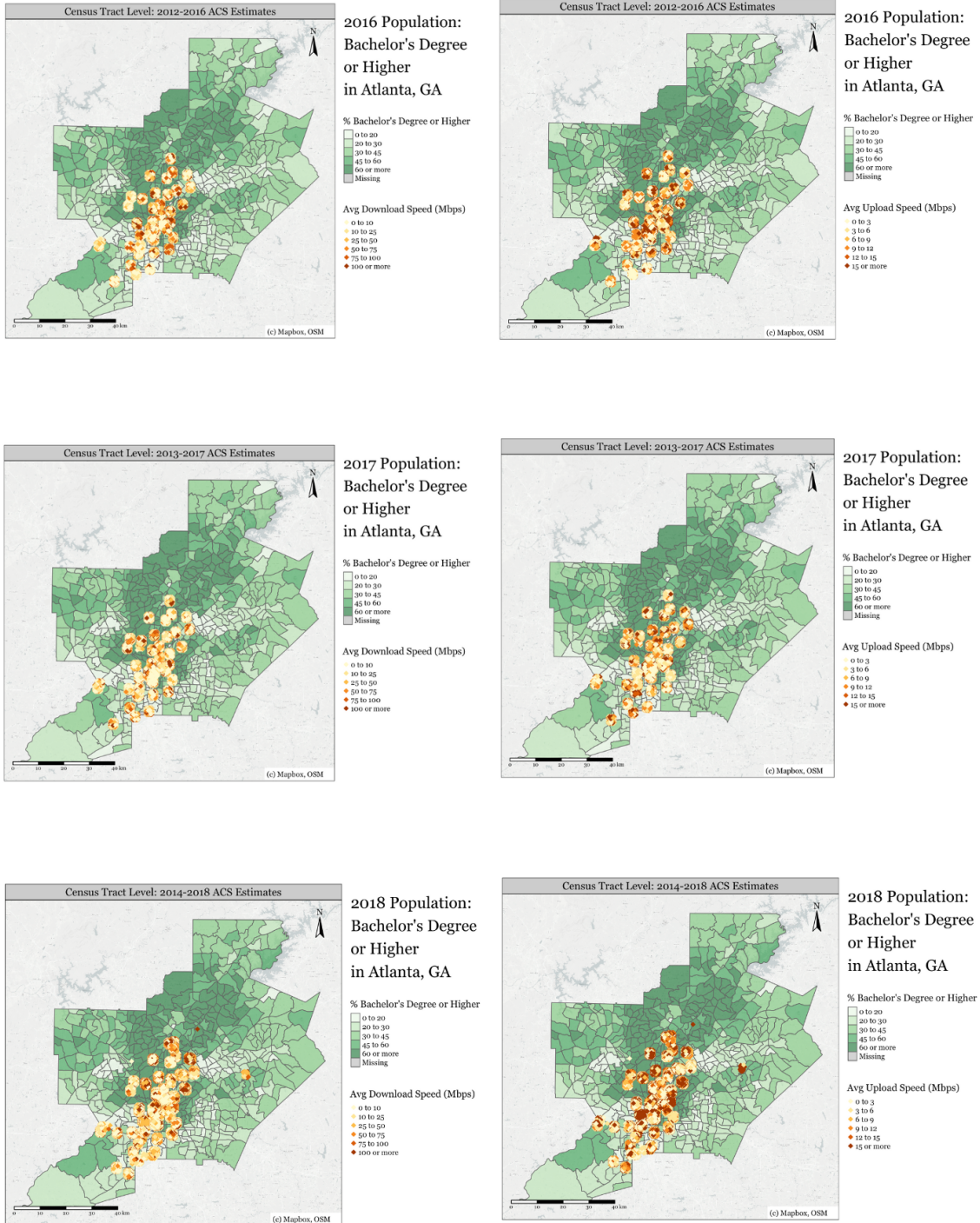


Figure 4.4: Internet Speeds and Educational Attainment (2019, 2020, 2021)

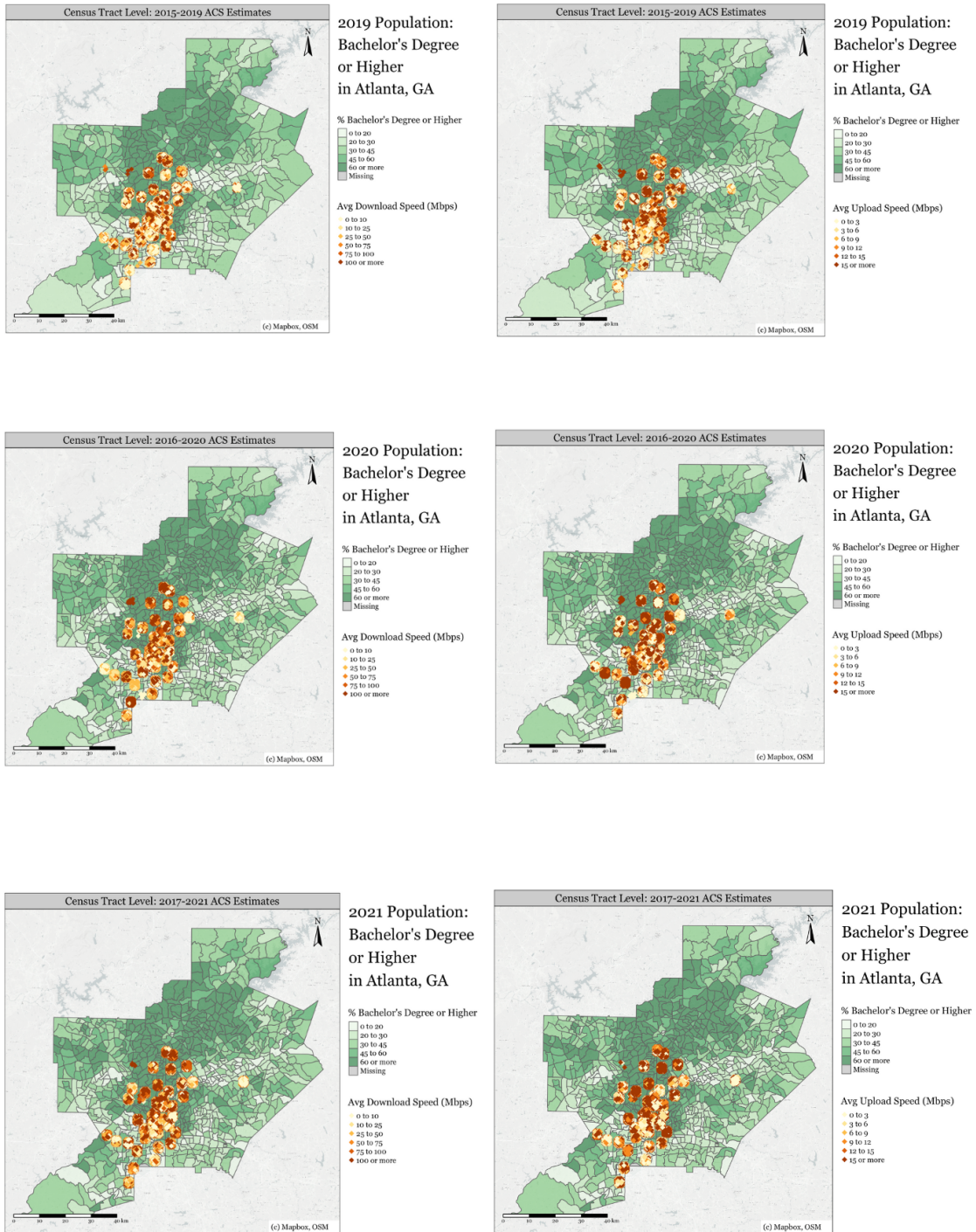


Table 1.1: Conley Regression Estimates for Download Speeds in 2010

Download Speeds in 2010									
	minority_pop_perc			bach_perc			median_income		
Distance (Km)	estimate	std. error	Pr(> t)	estimate	std. error	Pr(> t)	estimate	std. error	Pr(> t)
1	-4.07e-03	±2.69e-03	0.13	-2.63e-04	±5.06e-03	0.96	7.75e-08	±1.89e-06	0.97
2	-4.07e-03	±2.61e-03	0.12	-2.63e-04	±5.05e-03	0.96	7.75e-08	±1.89e-06	0.97
3	-4.06e-03	±2.56e-03	0.11	-2.63e-04	±5.16e-03	0.96	7.75e-08	±1.94e-06	0.97
4	-4.06e-03	±2.52e-03	0.11	-2.63e-04	±5.35e-03	0.96	7.75e-08	±2.02e-06	0.97
5	-4.07e-03	±2.49e-03	0.10	-2.63e-04	±5.49e-03	0.96	7.72e-08	±2.07e-06	0.97
6	-4.07e-03	±2.50e-03	0.10	-2.63e-04	±5.70e-03	0.96	7.75e-08	±2.11e-06	0.97
7	-4.07e-03	±2.53e-03	0.11	-2.63e-04	±5.89e-03	0.96	7.75e-08	±2.17e-06	0.97
8	-4.07e-03	±2.56e-03	0.11	-2.63e-04	±6.09e-03	0.97	7.75e-08	±2.27e-06	0.97
9	-4.07e-03	±2.59e-03	0.12	-2.63e-04	±6.21e-03	0.97	7.75e-08	±2.34e-06	0.97
10	-4.07e-03	±2.62e-03	0.12	-2.63e-04	±6.28e-03	0.97	7.75e-08	±2.40e-06	0.97

Table 1.2: Conley Regression Estimates for Download Speeds in 2015

Download Speeds in 2015									
	minority_pop_perc			bach_perc			median_income		
Distance (Km)	estimate	std. error	Pr(> t)	estimate	std. error	Pr(> t)	estimate	std. error	Pr(> t)
1	-2.84e-03	±3.74e-03	0.45	-1.83e-03	±7.92e-03	0.82	2.60e-06	±2.50e-06	0.29
2	-2.84e-03	±3.74e-03	0.45	-1.83e-03	±7.98e-03	0.82	2.60e-06	±2.47e-06	0.29
3	-2.84e-03	±3.75e-03	0.45	-1.83e-03	±8.16e-03	0.82	2.60e-06	±2.52e-06	0.30
4	-2.84e-03	±3.76e-03	0.45	-1.83e-03	±8.48e-03	0.83	2.60e-06	±2.58e-06	0.31
5	-2.84e-03	±3.79e-03	0.45	-1.83e-03	±8.74e-03	0.83	2.60e-06	±2.65e-06	0.33
6	-2.84e-03	±3.96e-03	0.47	-1.83e-03	±9.23e-03	0.84	2.60e-06	±2.69e-06	0.33
7	-2.84e-03	±4.11e-03	0.49	-1.83e-03	±9.69e-03	0.85	2.60e-06	±2.73e-06	0.34
8	-2.84e-03	±4.16e-03	0.50	-1.83e-03	±1.00e-02	0.86	2.60e-06	±2.82e-06	0.36
9	-2.84e-03	±4.21e-03	0.50	-1.83e-03	±1.03e-02	0.86	2.60e-06	±2.86e-06	0.36
10	-2.84e-03	±4.27e-03	0.51	-1.83e-03	±1.05e-02	0.86	2.60e-06	±2.91e-06	0.37

Table 1.3: Conley Regression Estimates for Upload Speeds in 2010

Upload Speeds in 2010									
	minority_pop_perc			bach_perc			median_income		
Distance (Km)	estimate	std. error	Pr(> t)	estimate	std. error	Pr(> t)	estimate	std. error	Pr(> t)
1	-5.35e-03	2.27e-03	0.019	1.75e-03	5.01e-03	0.73	-1.89e-06	1.91e-06	0.32
2	-5.35e-03	2.27e-03	0.018	1.75e-03	5.01e-03	0.73	-1.89e-06	1.92e-06	0.32
3	-5.35e-03	2.27e-03	0.018	1.75e-03	5.11e-03	0.73	-1.89e-06	1.95e-06	0.33
4	-5.35e-03	2.25e-03	0.018	1.75e-03	5.26e-03	0.74	-1.89e-06	1.88e-06	0.31
5	-5.35e-03	2.25e-03	0.017	1.75e-03	5.31e-03	0.74	-1.89e-06	1.83e-06	0.30
6	-5.35e-03	2.27e-03	0.018	1.75e-03	5.44e-03	0.74	-1.89e-06	1.84e-06	0.30
7	-5.35e-03	2.27e-03	0.018	1.75e-03	5.51e-03	0.75	-1.89e-06	1.84e-06	0.31
8	-5.35e-03	2.26e-03	0.018	1.75e-03	5.68e-03	0.76	1.89e-06	1.95e-06	0.33
9	-5.35e-03	2.28e-03	0.019	1.75e-03	5.79e-03	0.76	1.89e-06	1.98e-06	0.34
10	-5.35e-03	2.31e-03	0.021	1.75e-03	5.78e-03	0.76	-1.89e-06	1.97e-06	0.34

Table 1.4: Conley Regression Estimates for Upload Speeds in 2015

Upload Speeds in 2015									
	minority_pop_perc			bach_perc			median_income		
Distance (Km)	estimate	std. error	Pr(> t)	estimate	std. error	Pr(> t)	estimate	std. error	Pr(> t)
1	-3.14e-03	3.46e-03	0.36	1.72e-03	8.41e-03	0.84	2.15e-06	3.013e-06	0.48
2	-3.14e-03	3.47e-03	0.36	1.72e-03	8.48e-03	0.84	2.15e-06	3.012e-06	0.48
3	-3.14e-03	3.47e-03	0.37	1.72e-03	8.68e-03	0.84	2.15e-06	3.06e-06	0.48
4	-3.14e-03	3.53e-03	0.37	1.72e-03	9.11e-03	0.85	2.15e-06	3.16e-06	0.50
5	-3.14e-03	3.59e-03	0.38	1.72e-03	9.41e-03	0.86	2.15e-06	3.23e-06	0.50
6	-3.14e-03	3.77e-03	0.40	1.72e-03	9.86e-03	0.86	2.15e-06	3.27e-06	0.51
7	-3.14e-03	3.92e-03	0.42	1.72e-03	1.03e-02	0.87	2.15e-06	3.32e-06	0.52
8	-3.14e-03	4.05e-03	0.44	1.72e-03	1.06e-02	0.87	2.15e-06	3.41e-06	0.53
9	-3.14e-03	4.14e-03	0.45	1.72e-03	1.09e-02	0.87	2.15e-06	3.46e-06	0.53
10	-3.14e-03	4.24e-03	0.46	1.72e-03	1.10e-02	0.88	2.15e-06	3.50e-06	0.54